
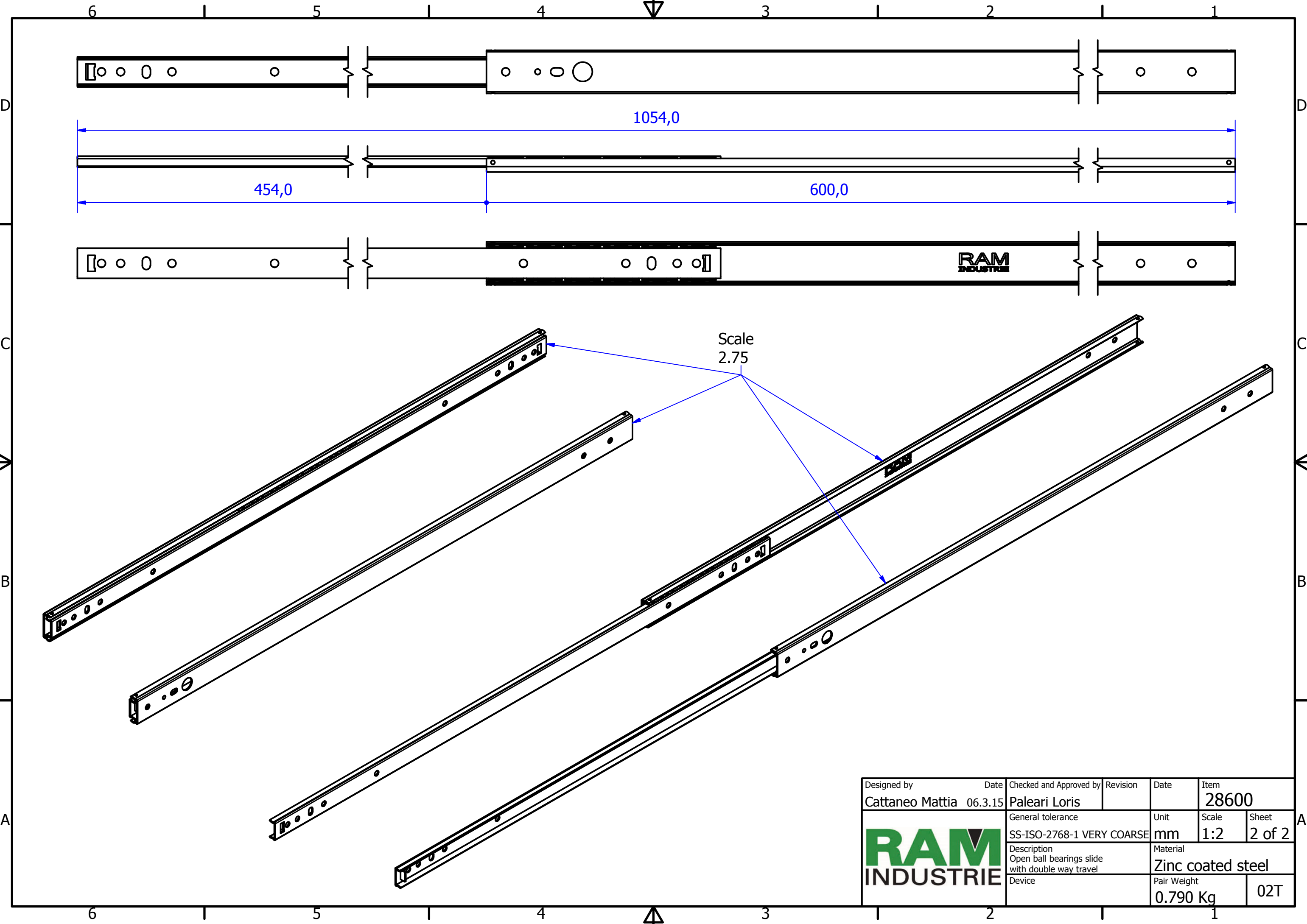



Designed by Cattaneo Mattia	Date 06.3.15	Checked and Approved by Paleari Loris	Revision	Date	Item 28600
		General tolerance SS-ISO-2768-1 MEDIUM		Unit mm	Scale 1:1.5
		Description Closed ball bearings slide with double way travel		Material Zinc coated steel	
Device				Pair Weight 0.790 Kg	02T

A



Scale
2.75

Designed by Cattaneo Mattia	Date 06.3.15	Checked and Approved by Paleari Loris	Revision	Date	Item 28600
		General tolerance SS-ISO-2768-1 VERY COARSE	Unit mm	Scale 1:2	Sheet 2 of 2
		Description Open ball bearings slide with double way travel	Material Zinc coated steel		
Device			Pair Weight 0.790 Kg	02T	