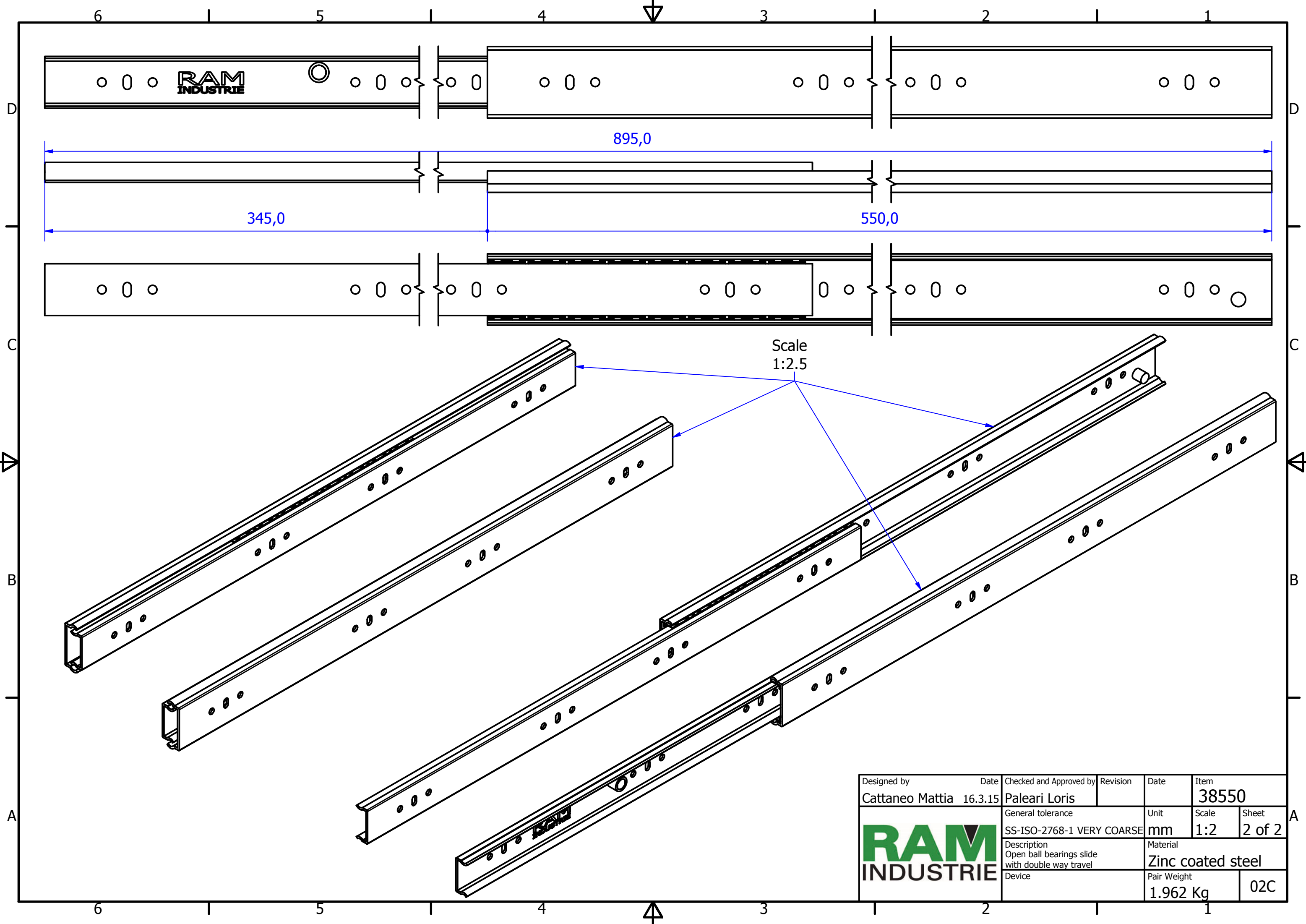



Designed by	Date	Checked and Approved by	Revision	Date	Item
Cattaneo Mattia	16.3.15	Paleari Loris			38550
General tolerance			Unit	Scale	Sheet
SS-ISO-2768-1 MEDIUM			mm	1:1.5	1 of 2
Description			Material		
Closed ball bearings slide with double way travel			Zinc coated steel		
Device			Pair Weight	02C	
			1.962 Kg		





Scale
1:2.5

Designed by Cattaneo Mattia	Date 16.3.15	Checked and Approved by Paleari Loris	Revision	Date	Item 38550
		General tolerance SS-ISO-2768-1 VERY COARSE	Unit mm	Scale 1:2	Sheet 2 of 2
		Description Open ball bearings slide with double way travel	Material Zinc coated steel		
Device		Pair Weight 1.962 Kg	02C		