

6 5 4 3 2 1

36,0 16,0 16,0 96,0 16,0 16,0 96,0 16,0 16,0 52,0 16,0 16,0 96,0 16,0 16,0 96,0 16,0 16,0 36,0

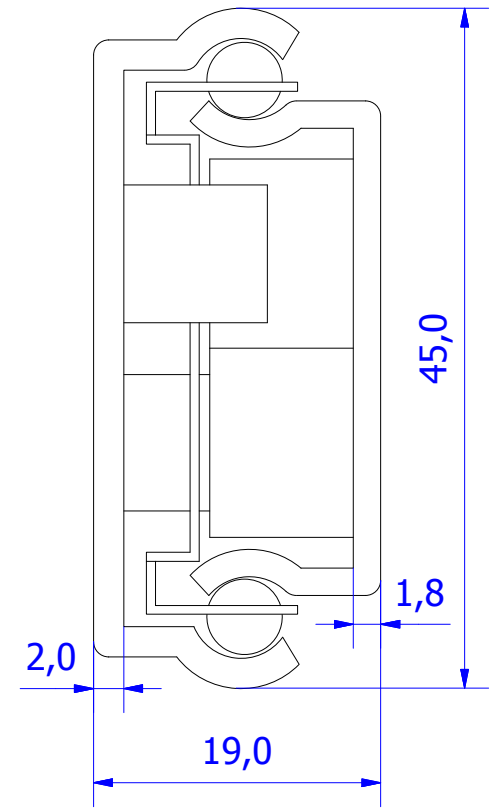
$\varnothing 5,5$  C  $\varnothing 5,5$   $\varnothing 5,5$  C  $\varnothing 5,5$   $\varnothing 5,5$  C  $\varnothing 5,5$   $\varnothing 5,5$  C  $\varnothing 5,5$   $\varnothing 5,5$  C  $\varnothing 5,5$   $\varnothing 5,5$  C  $\varnothing 5,5$   $\varnothing 5,5$  C  $\varnothing 5,5$

700,0

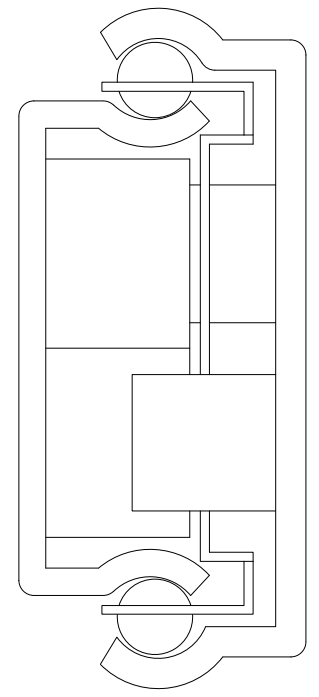
36,0 16,0 16,0 96,0 16,0 16,0 96,0 16,0 16,0 52,0 16,0 16,0 96,0 16,0 16,0 96,0 16,0 16,0 36,0

$\varnothing 5,5$  C  $\varnothing 5,5$   $\varnothing 5,5$  C  $\varnothing 5,5$   $\varnothing 5,5$  C  $\varnothing 5,5$   $\varnothing 5,5$  C  $\varnothing 5,5$   $\varnothing 5,5$  C  $\varnothing 5,5$   $\varnothing 5,5$  C  $\varnothing 5,5$   $\varnothing 5,5$  C  $\varnothing 5,5$   $\varnothing 5,5$  C  $\varnothing 5,5$

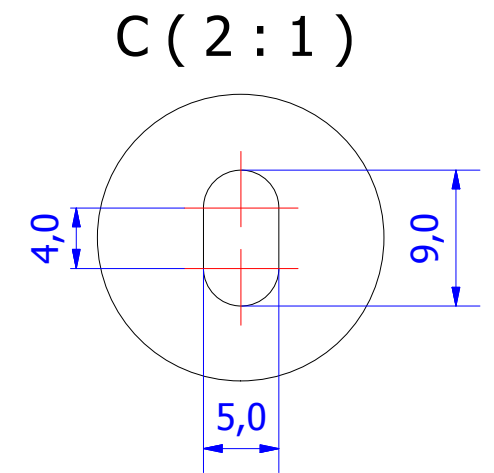
Cage with 22 ball bearings pairs



A (2 : 1)



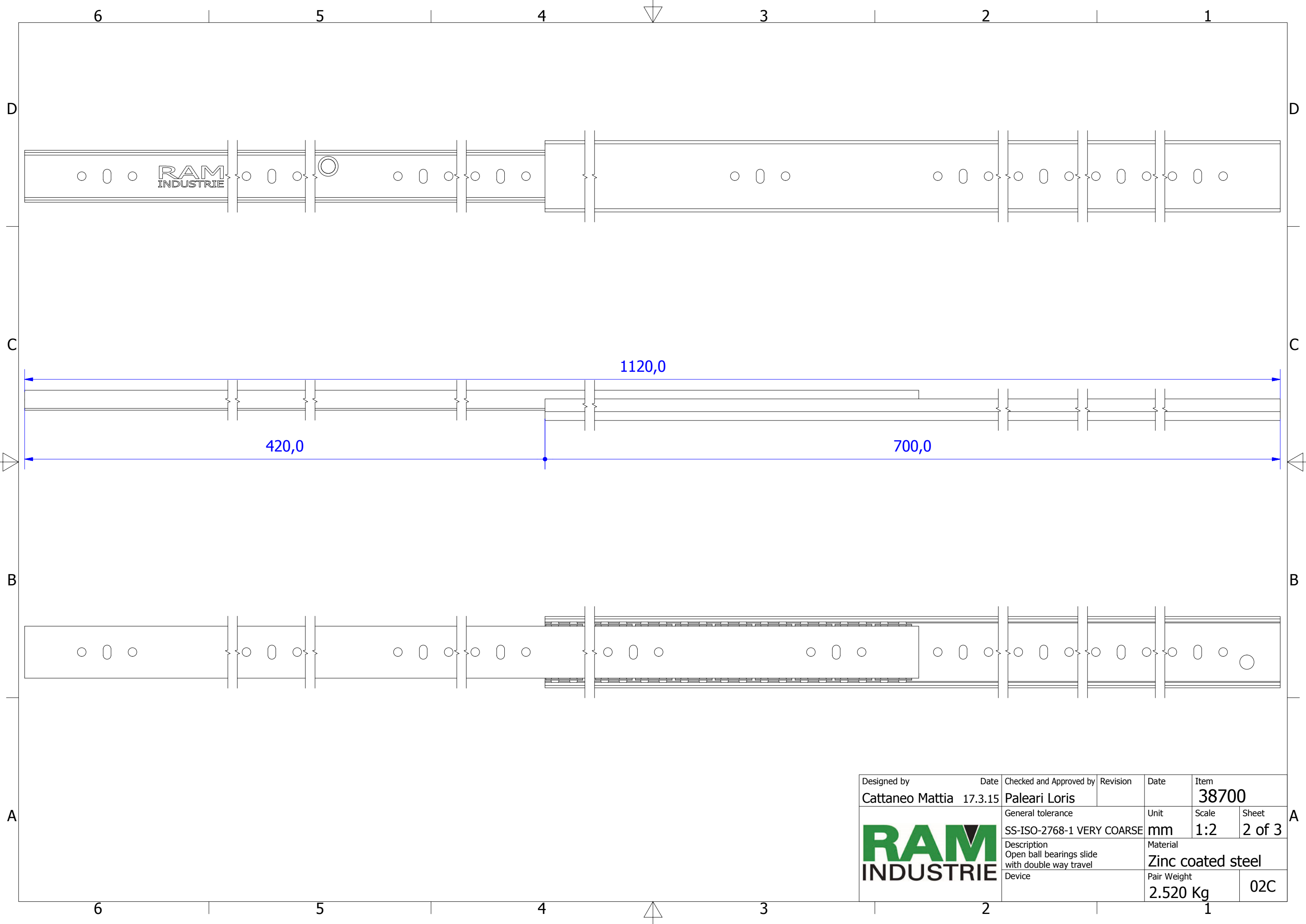
B (2 : 1)




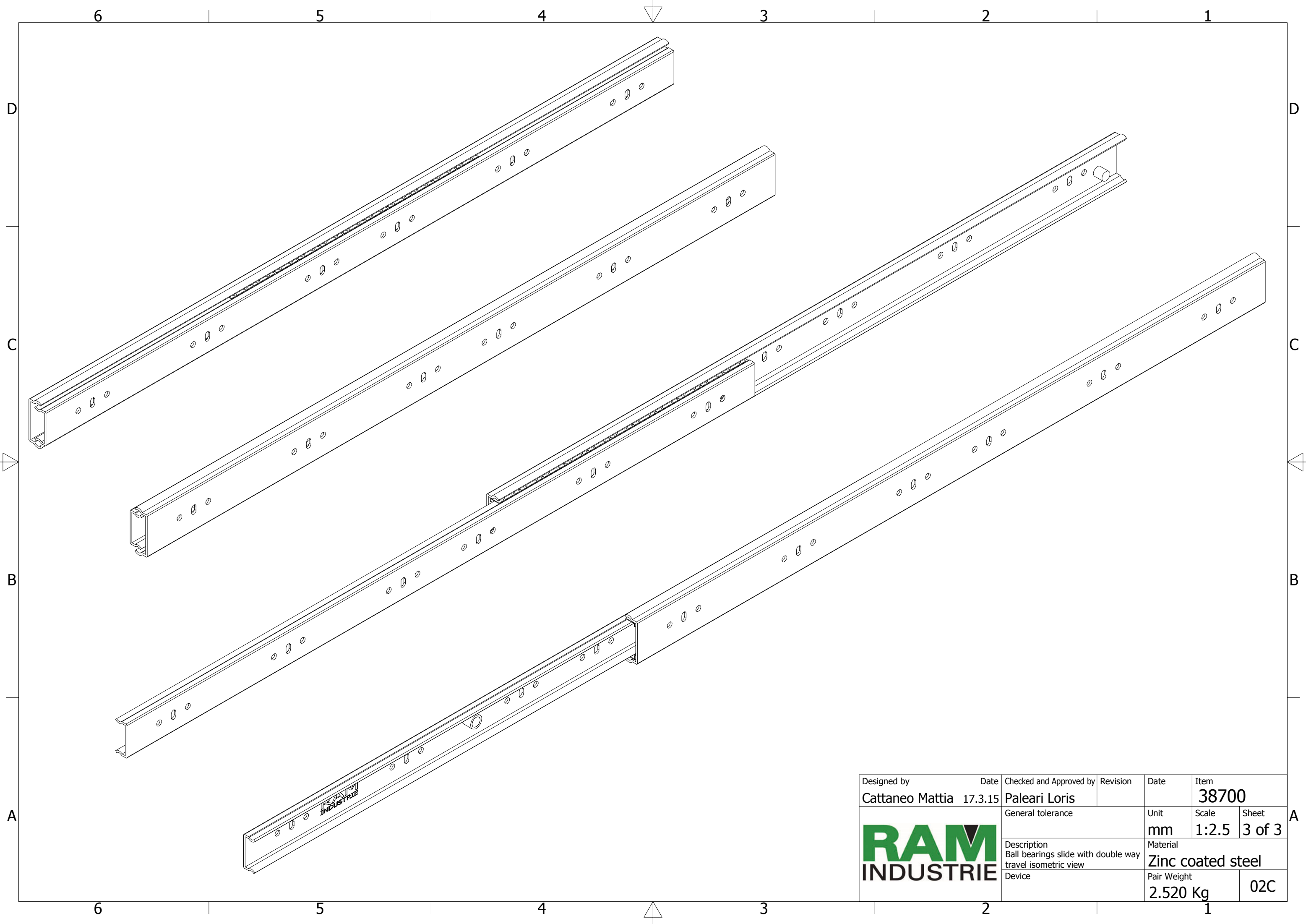
C (2 : 1)


Designed by <b>Cattaneo Mattia</b>	Date 17.3.15	Checked and Approved by <b>Paleri Loris</b>	Revision	Date	Item <b>38700</b>
		General tolerance SS-ISO-2768-1 MEDIUM		Unit mm	Scale 1:1.5
		Description Closed ball bearings slide with double way travel		Material Zinc coated steel	
		Device		Pair Weight 2.520 Kg	02C
				Sheet 1 of 3	A

6 5 4 3 2 1



Designed by <b>Cattaneo Mattia</b>	Date 17.3.15	Checked and Approved by <b>Paleari Loris</b>	Revision	Date	Item <b>38700</b>
	General tolerance SS-ISO-2768-1 VERY COARSE		Unit <b>mm</b>	Scale <b>1:2</b>	Sheet <b>2 of 3</b>
	Description Open ball bearings slide with double way travel		Material <b>Zinc coated steel</b>		
	Device		Pair Weight <b>2.520 Kg</b>	<b>02C</b>	



Designed by <b>Cattaneo Mattia</b>	Date 17.3.15	Checked and Approved by <b>Paleari Loris</b>	Revision	Date	Item <b>38700</b>
			General tolerance		Unit <b>mm</b>
			Description Ball bearings slide with double way travel isometric view		Scale <b>1:2.5</b>
Device				Material <b>Zinc coated steel</b>	Pair Weight <b>2.520 Kg</b>
					<b>02C</b>