
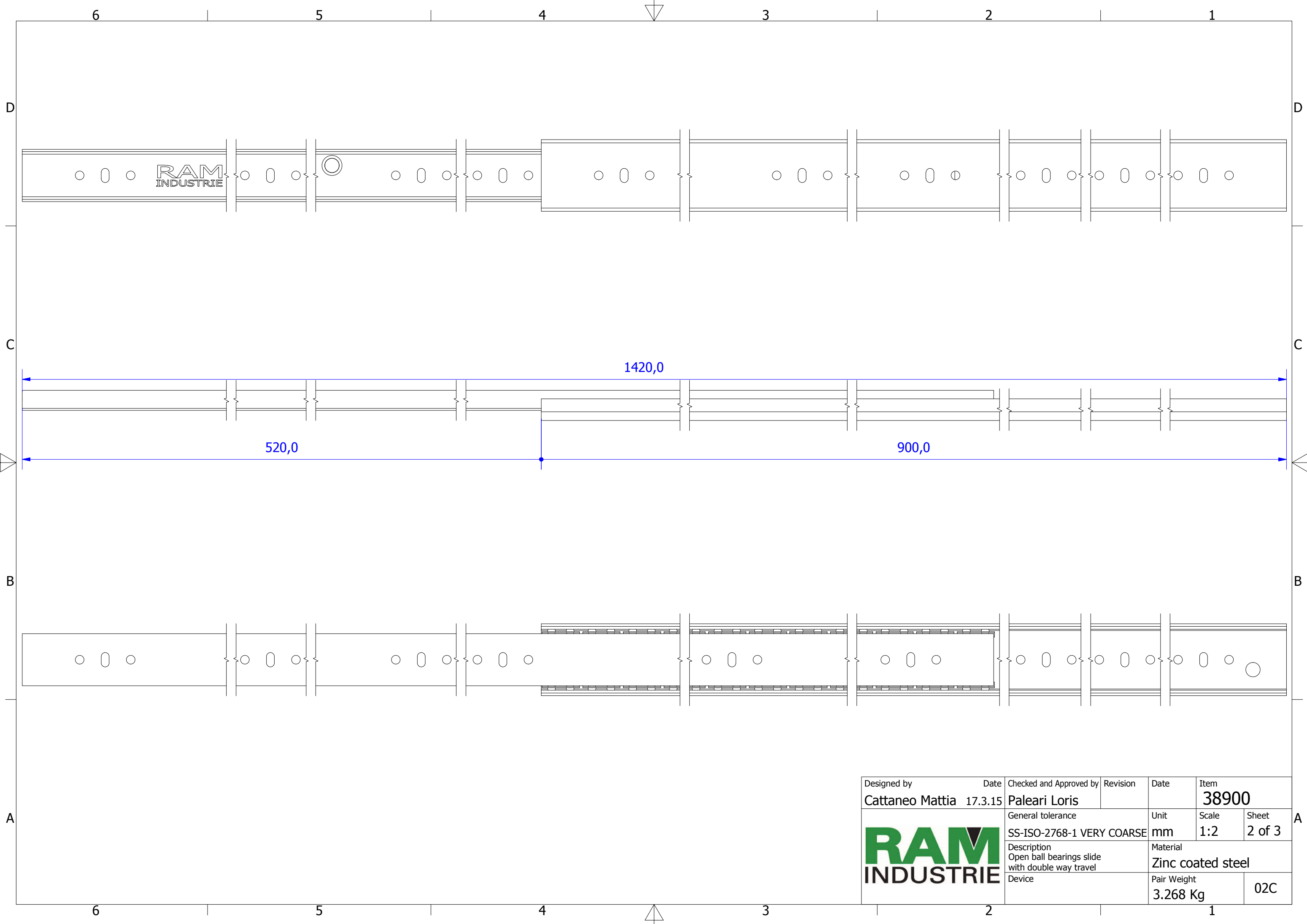

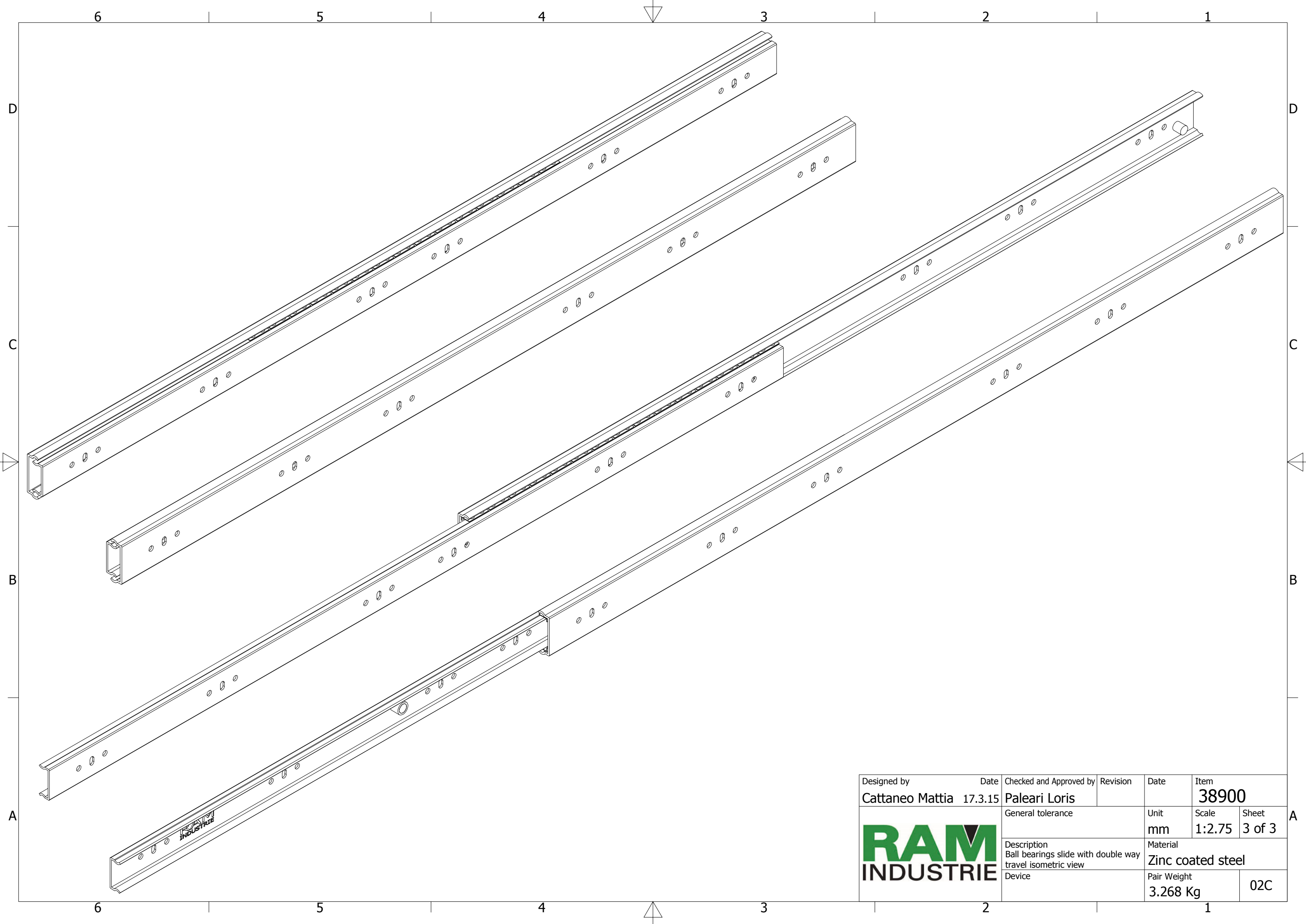



| | | | | | |
|---|-----------------|---|-------------------------------|-------------------------|----------------------|
| Designed by Cattaneo Mattia | Date 17.3.15 | Checked and Approved by Paleari Loris | Revision | Date | Item 38900 |
|  | | General tolerance SS-ISO-2768-1 MEDIUM | Unit mm | Scale 1:1.5 | Sheet 1 of 3 |
| | | Description Closed ball bearings slide with double way travel | Material Zinc coated steel | | |
| Device | | | | Pair Weight 3.268 Kg | 02C |



| | | | | | |
|---|---|---|------------|-------------------------------|----------------------|
| Designed by Cattaneo Mattia | Date 17.3.15 | Checked and Approved by Paleari Loris | Revision | Date | Item 38900 |
|  | General tolerance SS-ISO-2768-1 VERY COARSE | | Unit mm | Scale 1:2 | Sheet 2 of 3 |
| | Description Open ball bearings slide with double way travel | | | Material Zinc coated steel | |
| | Device | | | Pair Weight 3.268 Kg | 02C |



| | | | | | |
|---|-----------------|---|--|-------------------------------|----------------------|
| Designed by Cattaneo Mattia | Date 17.3.15 | Checked and Approved by Paleari Loris | Revision | Date | Item 38900 |
|  | | | General tolerance | | Unit mm |
| | | | Description Ball bearings slide with double way travel isometric view | | Scale 1:2.75 |
| Device | | | | Material Zinc coated steel | |
| | | | | Pair Weight 3.268 Kg | |
| | | | | 02C | |

RAM
INDUSTRIE