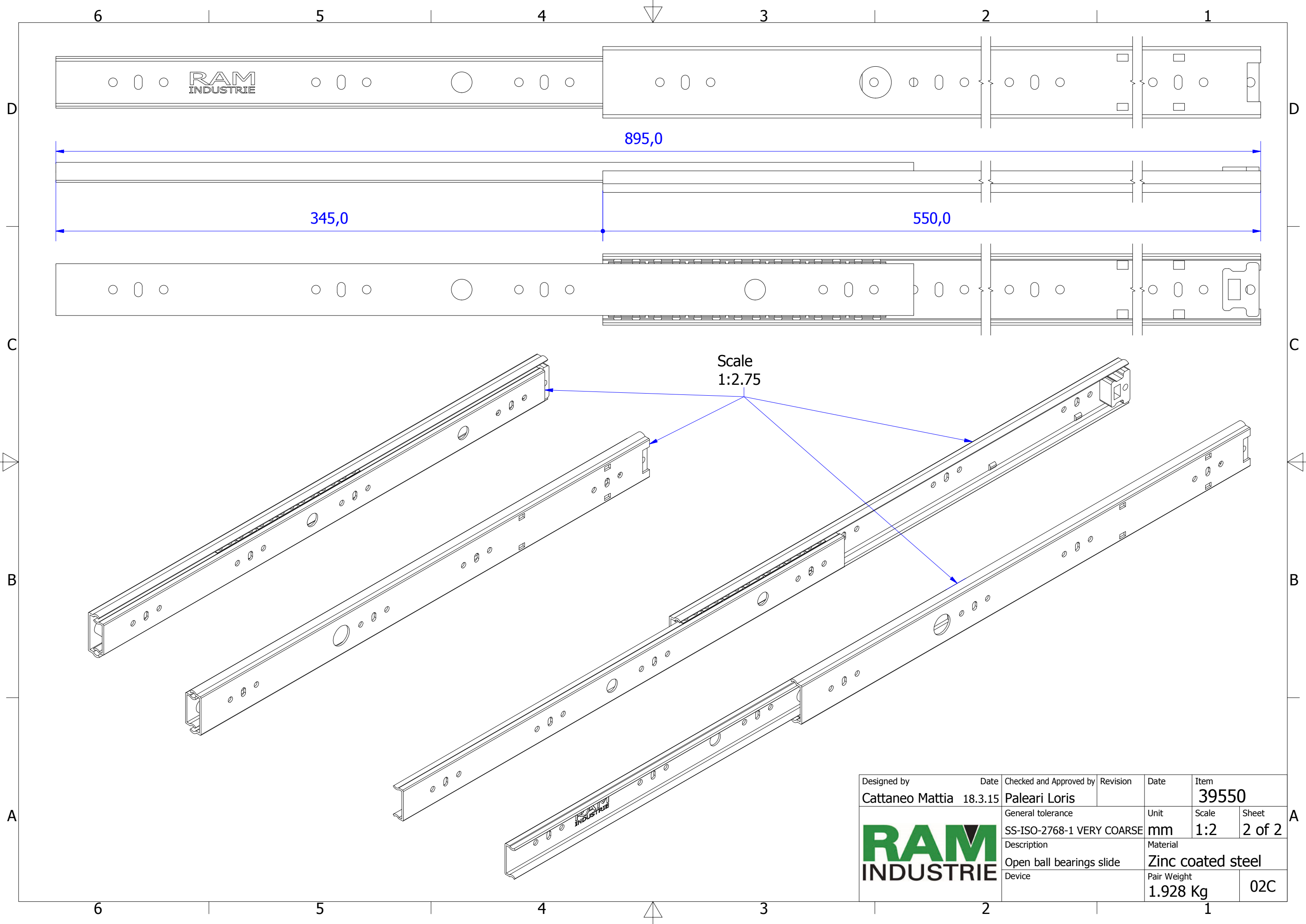


Designed by	Date	Checked and Approved by	Revision	Date	Item
Cattaneo Mattia	18.3.15	Paleari Loris			39550
General tolerance			Unit	Scale	Sheet
SS-ISO-2768-1 MEDIUM			mm	1:1.5	1 of 2
Description			Material		
Closed ball bearings slide			Zinc coated steel		
Device			Pair Weight	02C	
			1.928 Kg		





Scale  
1:2.75

Designed by	Date	Checked and Approved by	Revision	Date	Item
Cattaneo Mattia	18.3.15	Paleari Loris			39550
General tolerance			Unit	Scale	Sheet
SS-ISO-2768-1 VERY COARSE			mm	1:2	2 of 2
Description			Material		
Open ball bearings slide			Zinc coated steel		
Device			Pair Weight	02C	
			1.928 Kg		

