


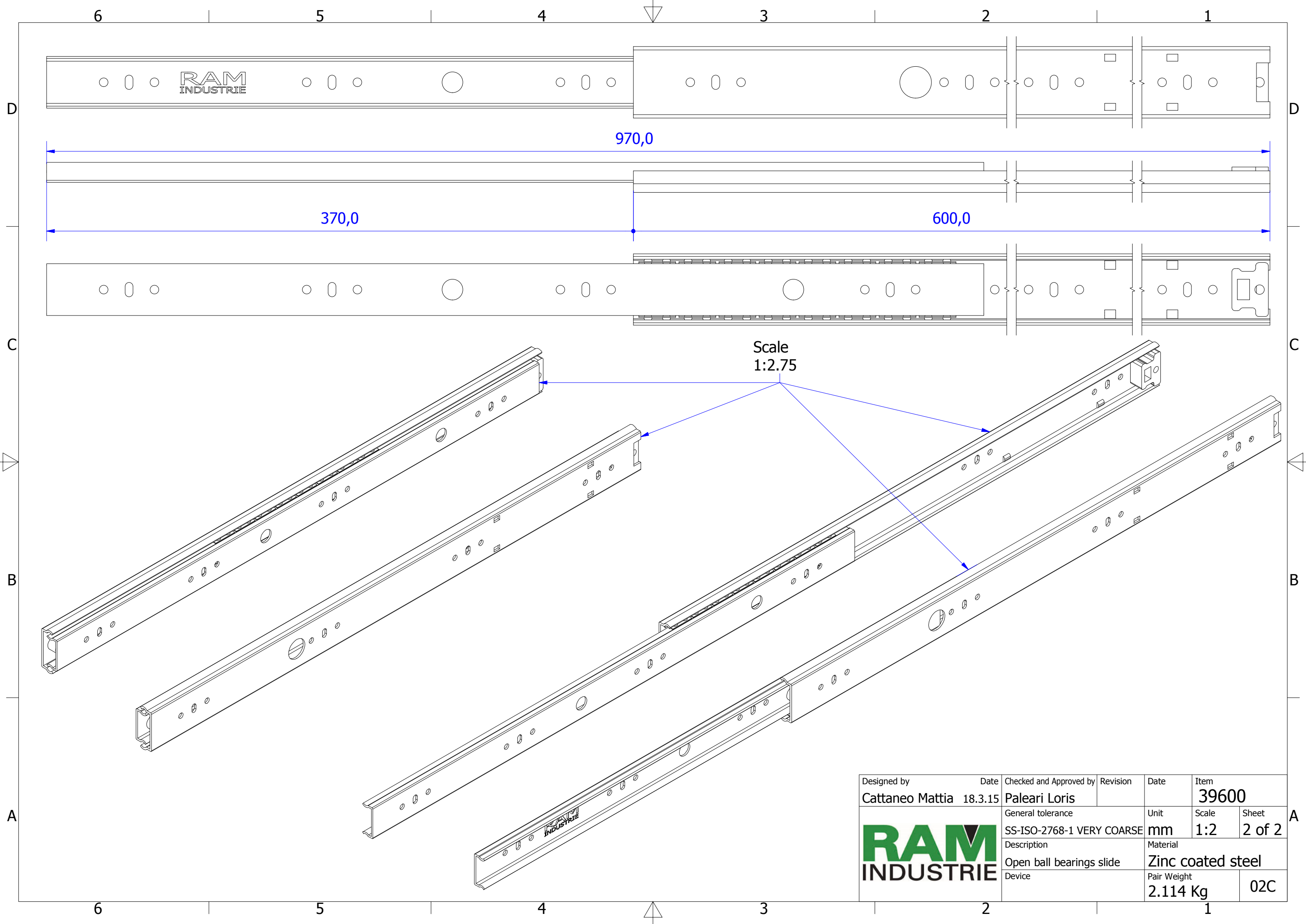
Cage with 16 ball bearings pairs

A (2 : 1)


B (2 : 1)

C (2 : 1)

Designed by Cattaneo Mattia	Date 18.3.15	Checked and Approved by Paleari Loris	Revision	Date	Item 39600
		General tolerance SS-ISO-2768-1 MEDIUM	Unit mm	Scale 1:1.5	Sheet 1 of 2
		Description Closed ball bearings slide	Material Zinc coated steel		
		Device	Pair Weight 2.114 Kg	02C	



Scale
1:2.75

Designed by	Date	Checked and Approved by	Revision	Date	Item
Cattaneo Mattia	18.3.15	Paleari Loris			39600
	General tolerance		Unit	Scale	Sheet
	SS-ISO-2768-1 VERY COARSE		mm	1:2	2 of 2
	Description		Material		
Open ball bearings slide		Zinc coated steel			
Device		Pair Weight		02C	
		2.114 Kg			