
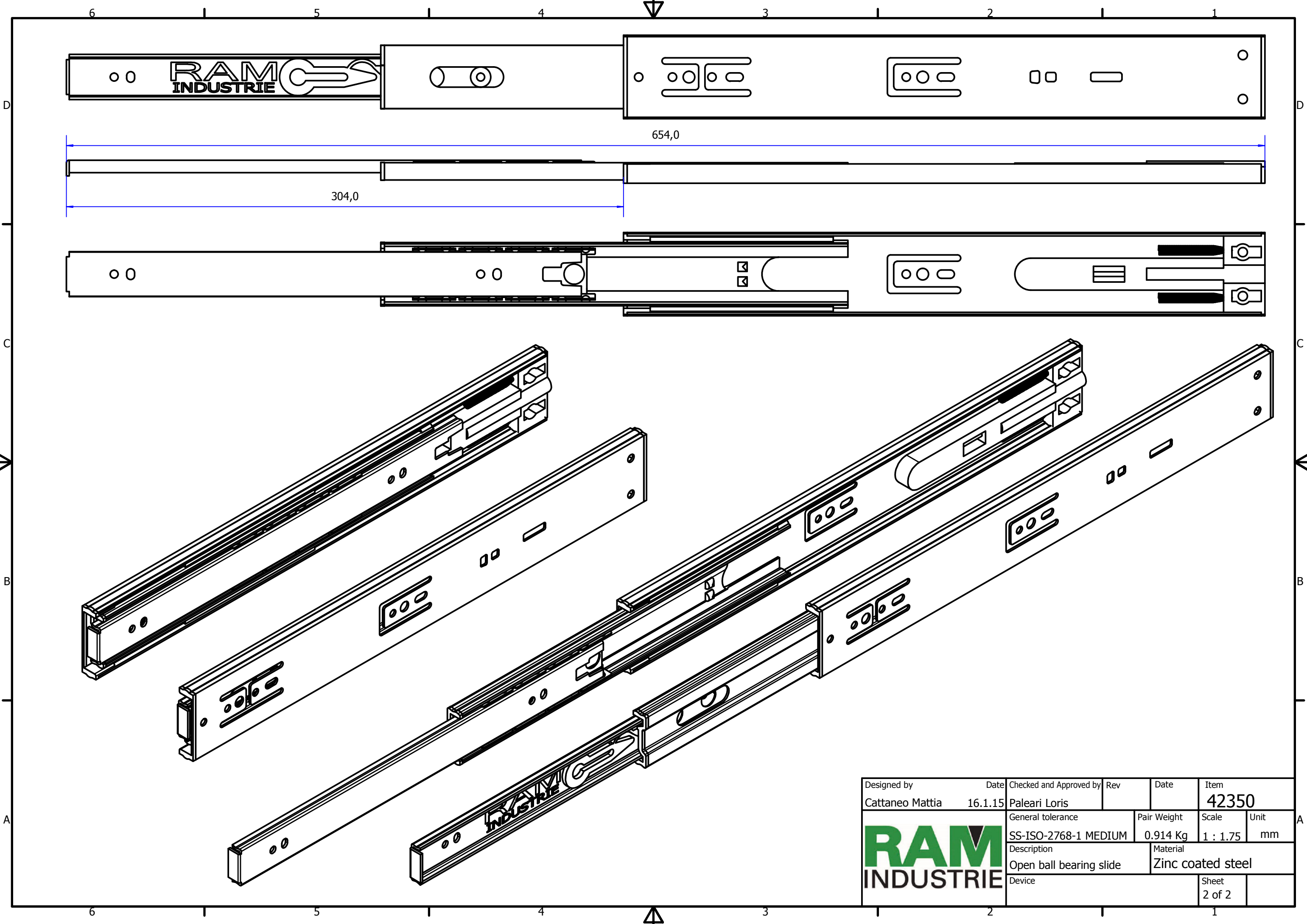


Designed by Cattaneo Mattia	Date 16.1.15	Checked and Approved by Paleari Loris	Rev	Date	Item 42350
		General tolerance SS-ISO-2768-1 MEDIUM	Pair Weight 0.914 Kg	Scale 1 : 1	Unit mm
		Description Closed ball bearing slide	Material Zinc coated steel		Sheet 1 of 2



Designed by	Date	Checked and Approved by	Rev	Date	Item
Cattaneo Mattia	16.1.15	Paleari Loris			42350
General tolerance			Pair Weight	Scale	Unit
SS-ISO-2768-1 MEDIUM			0.914 Kg	1 : 1.75	mm
Description				Material	
Open ball bearing slide				Zinc coated steel	
Device					Sheet
					2 of 2

