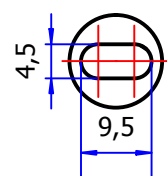
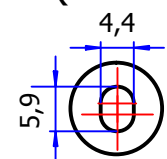


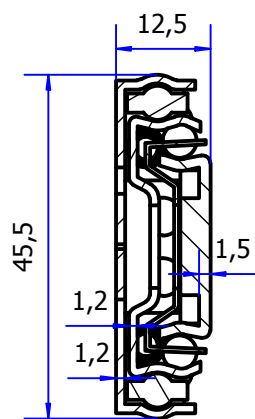
B (1 : 1)



C (1 : 1)

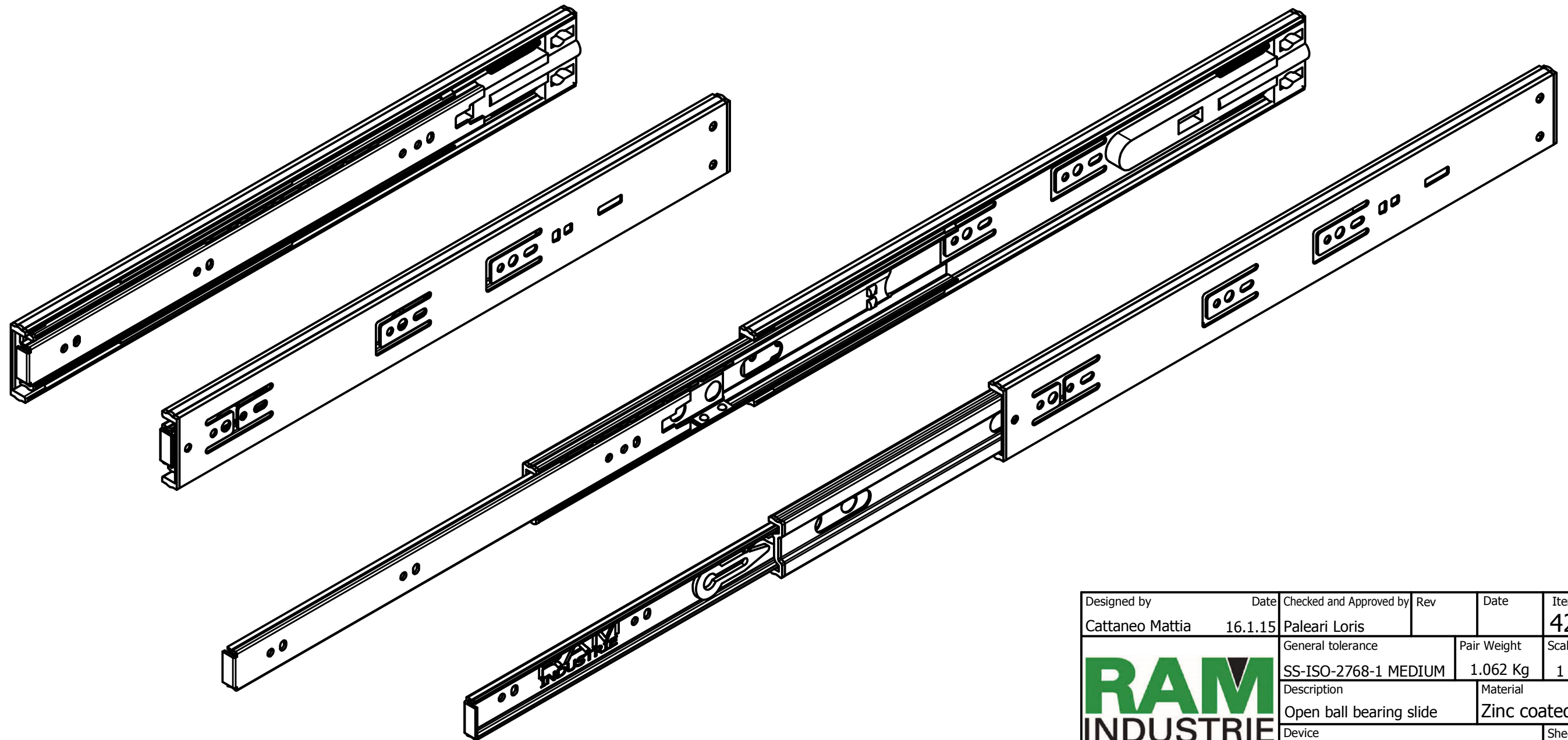
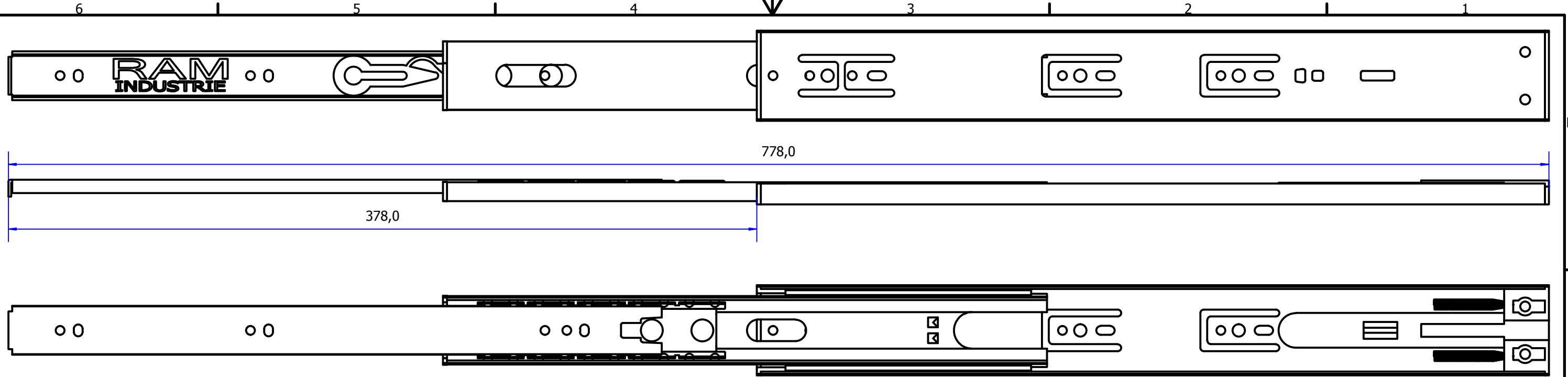


A-A (1 : 1)



Designed by	Date	Checked and Approved by	Rev	Date	Item
Cattaneo Mattia	16.1.15	Paleari Loris			42400
General tolerance			Pair Weight	Scale	Unit
SS-ISO-2768-1 MEDIUM			1.062 Kg	1 : 1.25	mm
Description				Material	
Closed ball bearings slide				Zinc coated steel	
Device					Sheet
Soft-self closing					1 of 2





Designed by	Date	Checked and Approved by	Rev	Date	Item
Cattaneo Mattia	16.1.15	Paleari Loris			42400
General tolerance			Pair Weight	Scale	Unit
SS-ISO-2768-1 MEDIUM			1.062 Kg	1 : 2	mm
Description				Material	
Open ball bearing slide				Zinc coated steel	
Device				Sheet	
Soft-self closing				2 of 2	

