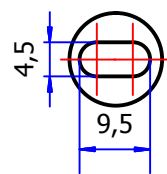
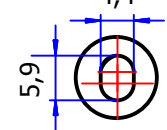


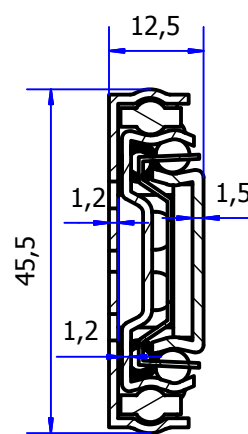
B (1 : 1)




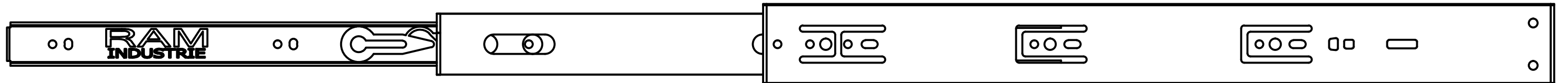
C (1 : 1)



A-A (1 : 1)

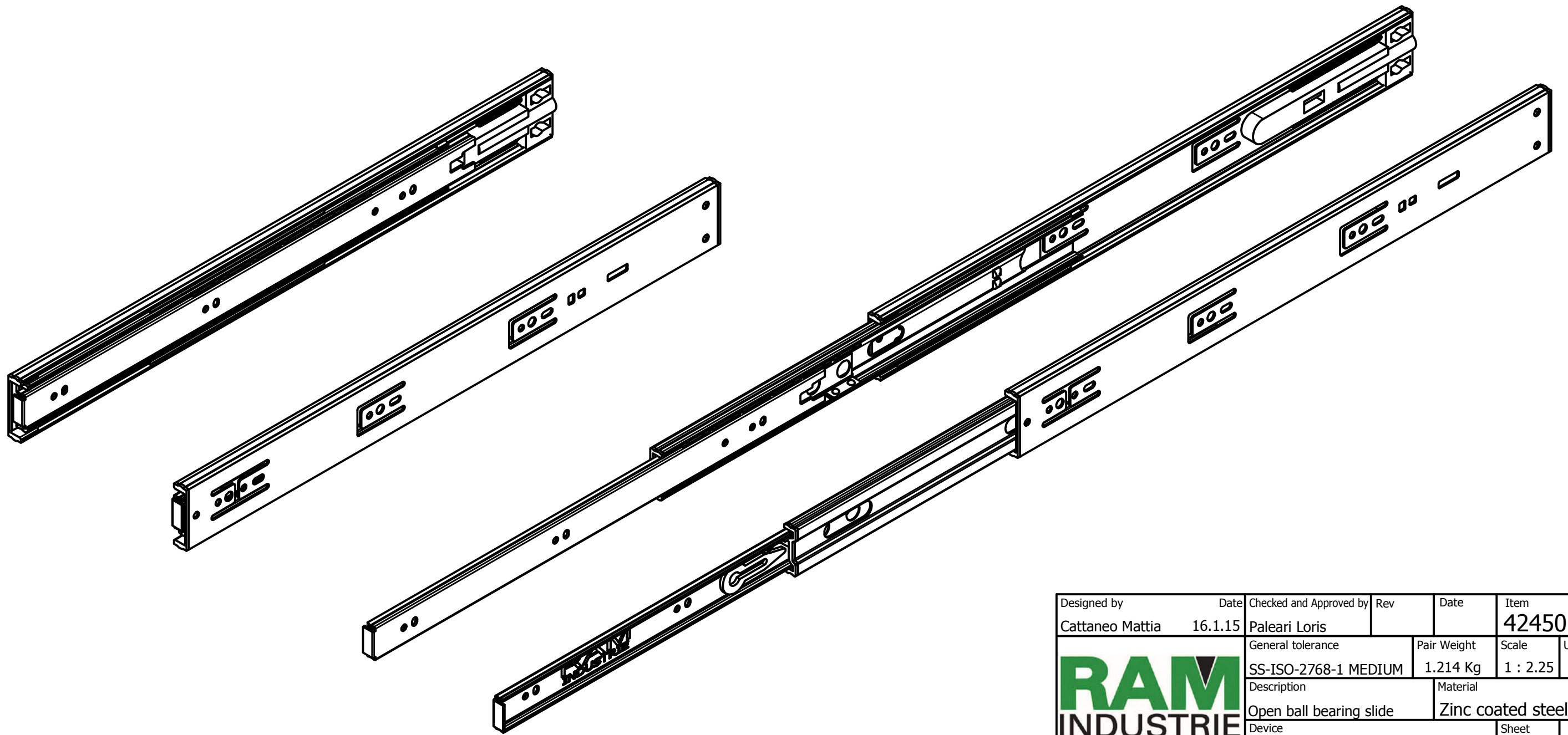


Designed by Cattaneo Mattia	Date 16.1.15	Checked and Approved by Paleari Loris	Rev	Date	Item 42450
		General tolerance SS-ISO-2768-1 MEDIUM	Pair Weight 1.214 Kg	Scale 1 : 1.25	Unit mm
		Description Closed ball bearing slide		Material Zinc coated steel	
Device Soft-self closing				Sheet 1 of 2	



880,0

430,0



Designed by	Date	Checked and Approved by	Rev	Date	Item
Cattaneo Mattia	16.1.15	Paleari Loris			42450
General tolerance			Pair Weight	Scale	Unit
SS-ISO-2768-1 MEDIUM			1.214 Kg	1 : 2.25	mm
Description				Material	
Open ball bearing slide				Zinc coated steel	
Device					Sheet
Soft-self closing					2 of 2

