
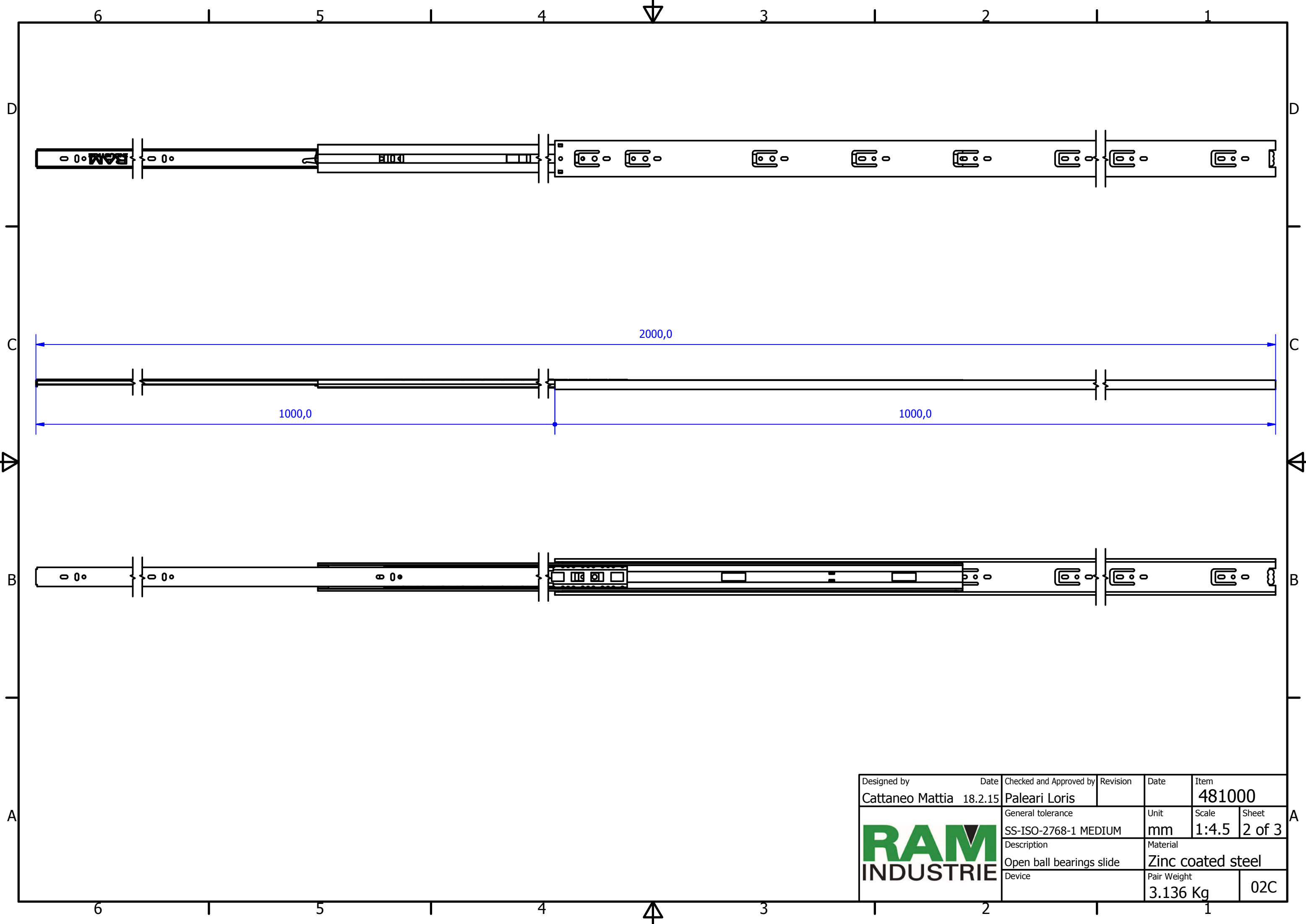

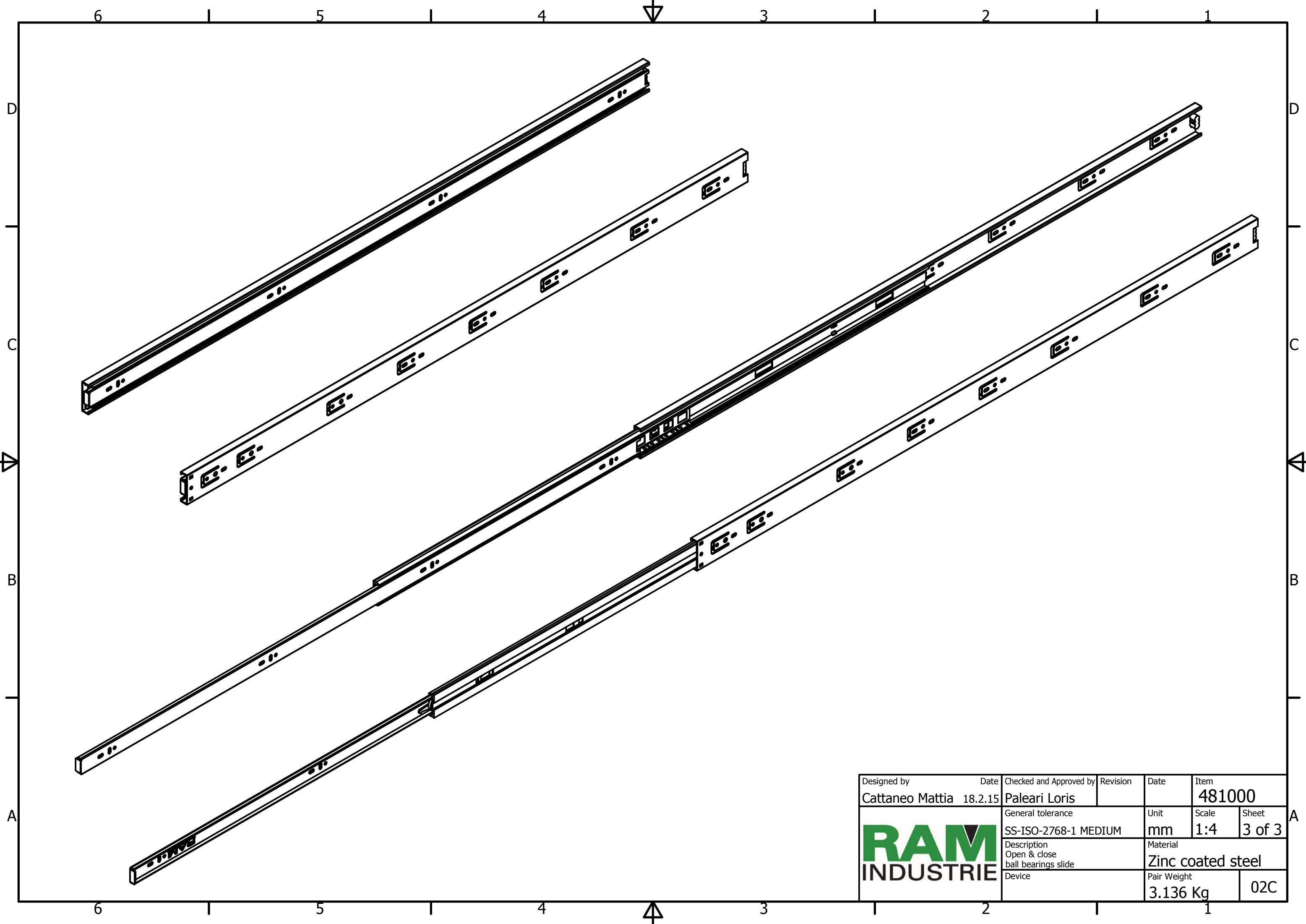



Designed by Cattaneo Mattia	Date 18.2.15	Checked and Approved by Paleari Loris	Revision	Date	Item 481000
		General tolerance SS-ISO-2768-1 MEDIUM	Unit mm	Scale 1:1.75	Sheet 1 of 3
		Description Closed ball bearings slide	Material Zinc coated steel	Pair Weight 3.136 Kg	02C



Designed by Cattaneo Mattia	Date 18.2.15	Checked and Approved by Paleari Loris	Revision	Date	Item 481000
	General tolerance SS-ISO-2768-1 MEDIUM		Unit mm	Scale 1:4.5	Sheet 2 of 3
	Description Open ball bearings slide		Material Zinc coated steel		
	Device		Pair Weight 3.136 Kg	02C	



Designed by Cattaneo Mattia	Date 18.2.15	Checked and Approved by Paleari Loris	Revision	Date	Item 481000
	General tolerance SS-ISO-2768-1 MEDIUM		Unit mm	Scale 1:4	Sheet 3 of 3
	Description Open & close ball bearings slide		Material Zinc coated steel		
	Device		Pair Weight 3.136 Kg		02C