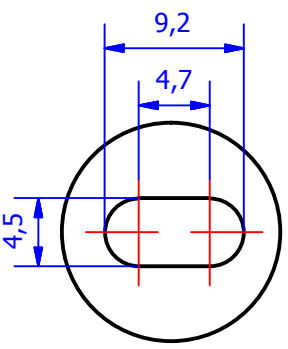
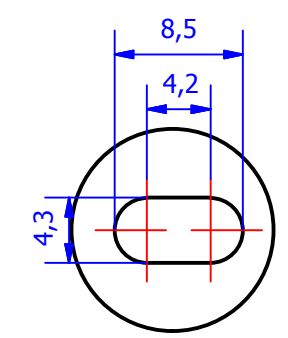


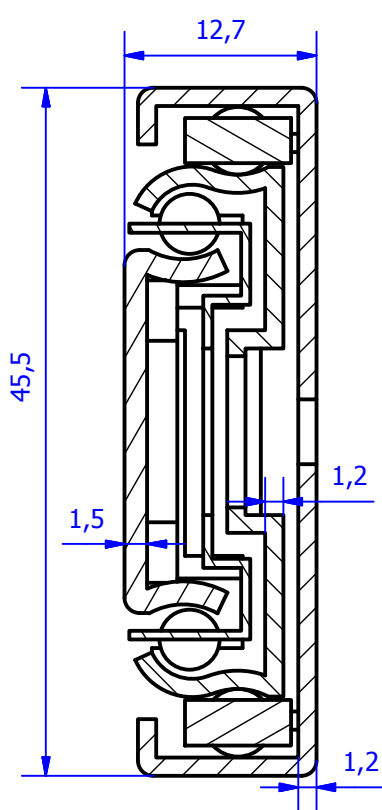
Cage with 52 ball bearings



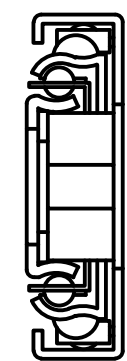
D (2 : 1)



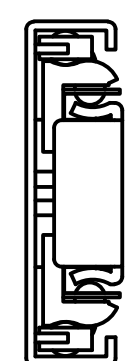
E (2 : 1)




C-C (2 : 1)

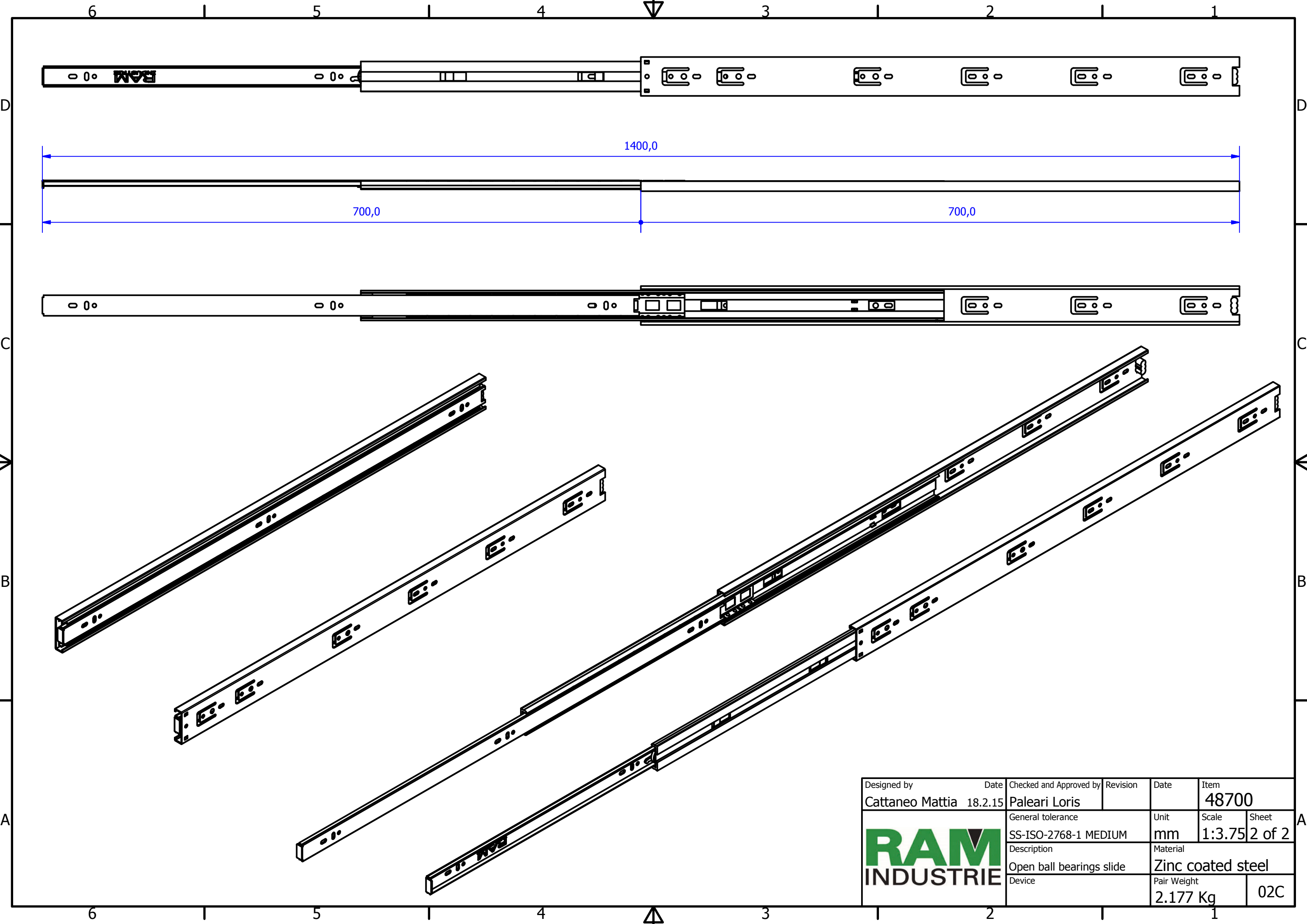



B (1 : 1)



A (1 : 1)

Designed by Cattaneo Mattia	Date 18.2.15	Checked and Approved by Paleari Loris	Revision	Date	Item 48700
		General tolerance SS-ISO-2768-1 MEDIUM	Unit mm	Scale 1:1.75	Sheet 1 of 2
		Description Closed ball bearings slide	Material Zinc coated steel	Pair Weight 2.177 Kg	02C



Designed by Cattaneo Mattia	Date 18.2.15	Checked and Approved by Paleari Loris	Revision	Date	Item 48700
	General tolerance SS-ISO-2768-1 MEDIUM	Description Open ball bearings slide	Unit mm	Scale 1:3.75	Sheet 2 of 2
	Material Zinc coated steel			Pair Weight 2.177 Kg	02C