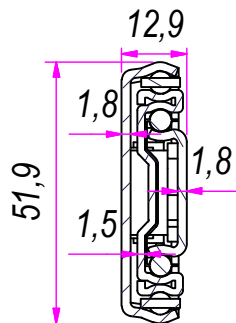
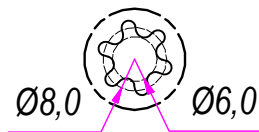


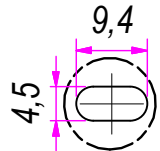
SEZ. A-A



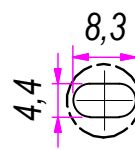
D (1:1)



C (1:1)



B (1:1)

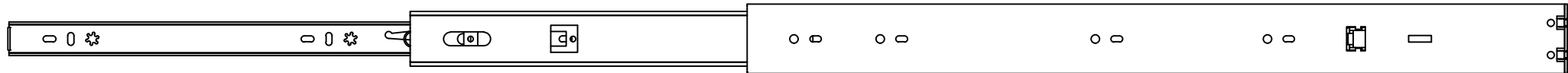


REVISION HISTORY			
REV	DESCRIPTION	APPROVED BY	DATE
1		F.Dino	18/10/2016

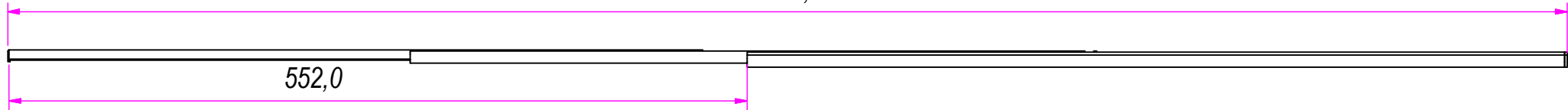
DESIGNED BY F.Dino	CHECKED AND APPROVED BY L. Paleari	DATE 18/10/2016	CODE 55600
GENERAL TOLLERANCE SS-ISO-2768-1M		UNIT mm	SCALE 1 of 2
DESCRIPTION Soft-Self closing with double-spring		MATERIAL Cold rolled steel	
PAIR WEIGHT 2,542 Kg		01T	

RAM
INDUSTRIE

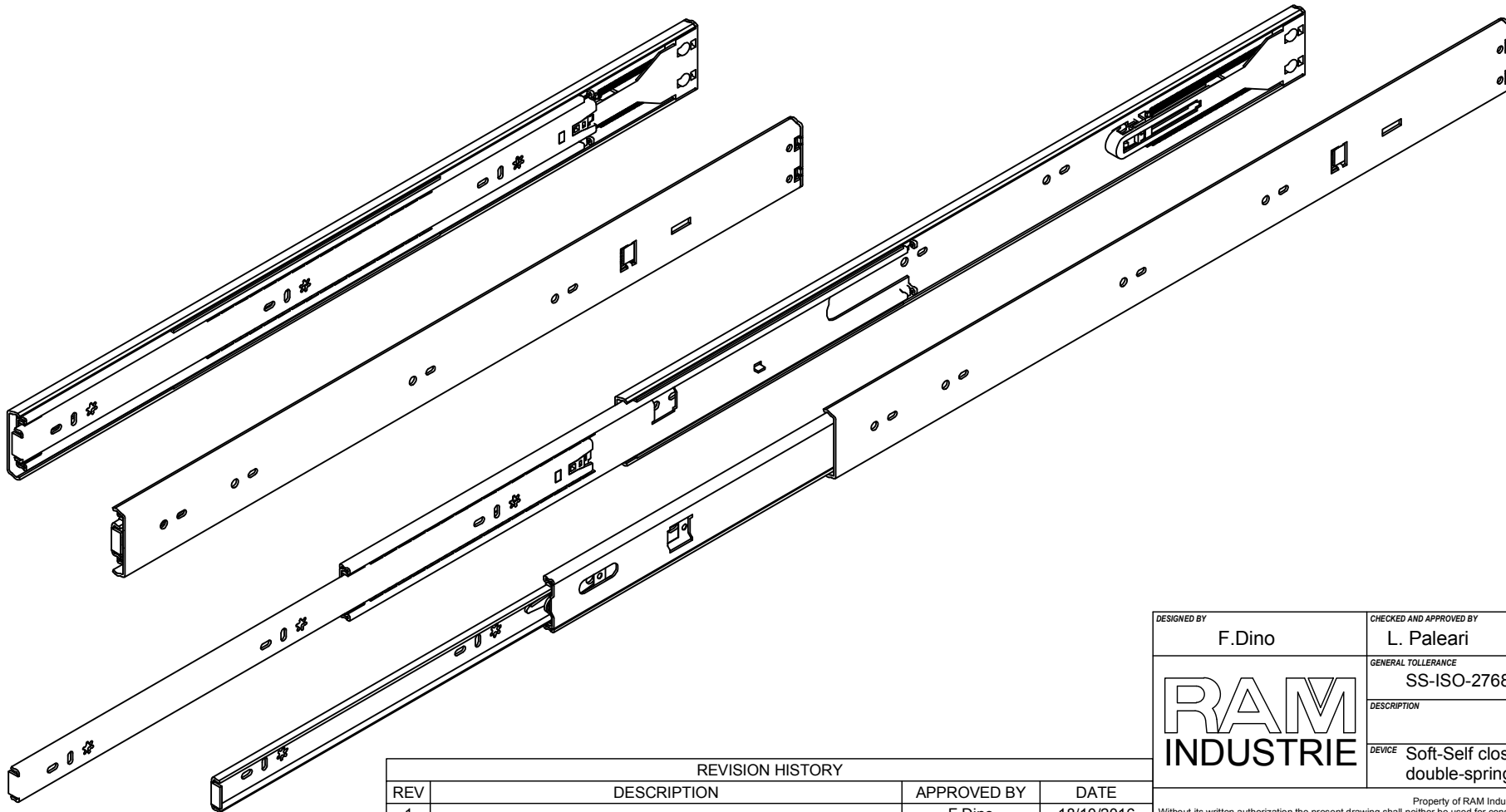
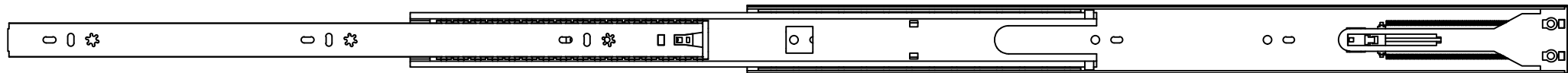
Property of RAM Industrie.
Without its written authorization the present drawing shall neither be used for construction anyway, communicated to third parties, nor reproduced.



1162,0



552,0



REVISION HISTORY			
REV	DESCRIPTION	APPROVED BY	DATE
1		F.Dino	18/10/2016

DESIGNED BY F.Dino	CHECKED AND APPROVED BY L. Paleari	DATE 18/10/2016	CODE 55600
GENERAL TOLLERANCE SS-ISO-2768-1M		UNIT mm	SCALE SHEET 2 of 2
DESCRIPTION		MATERIAL Cold rolled steel	
DEVICE Soft-Self closing with double-spring		PAIR WEIGHT 2,542 Kg	01T

RAM
INDUSTRIE

Property of RAM Industrie.
Without its written authorization the present drawing shall neither be used for construction anyway, communicated to third parties, nor reproduced.