


Cage with 22 ball bearings
Cage with 20 ball bearings

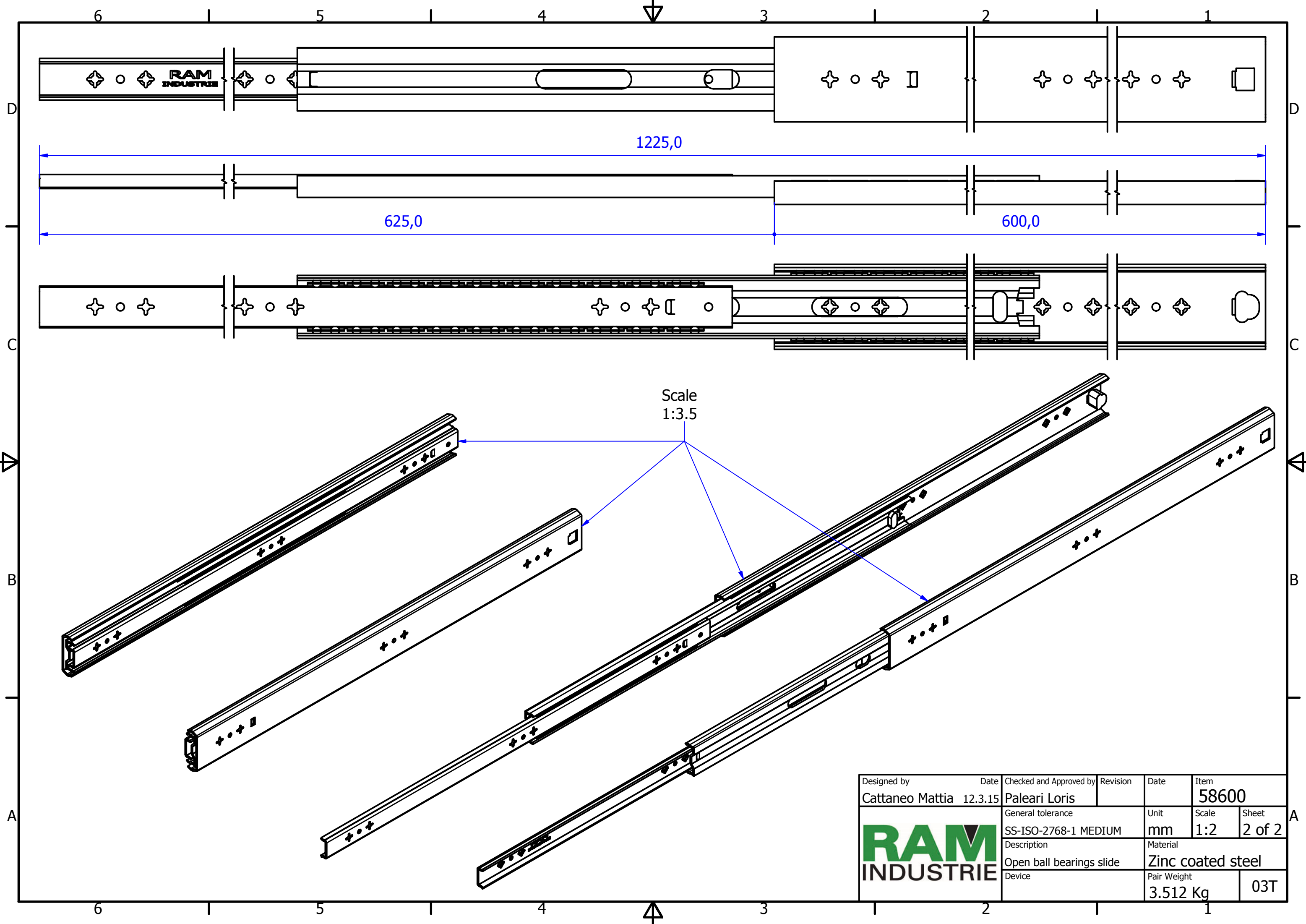
D (2 : 1)

A (1.5 : 1)


B (1.5 : 1)

C-C (1.5 : 1)

Designed by Cattaneo Mattia	Date 12.3.15	Checked and Approved by Paleari Loris	Revision	Date	Item 58600
			General tolerance SS-ISO-2768-1 MEDIUM	Unit mm	Scale 1:1.5
			Description Closed ball bearings slide	Material Zinc coated steel	Sheet 1 of 2
Device				Pair Weight 3.512 Kg	03T



Scale
1:3.5

Designed by Cattaneo Mattia	Date 12.3.15	Checked and Approved by Paleari Loris	Revision	Date	Item 58600
		General tolerance SS-ISO-2768-1 MEDIUM	Unit mm	Scale 1:2	Sheet 2 of 2
		Description Open ball bearings slide	Material Zinc coated steel		Pair Weight 3.512 Kg
Device					