


Cage with 28 ball bearings  
Cage with 26 ball bearings

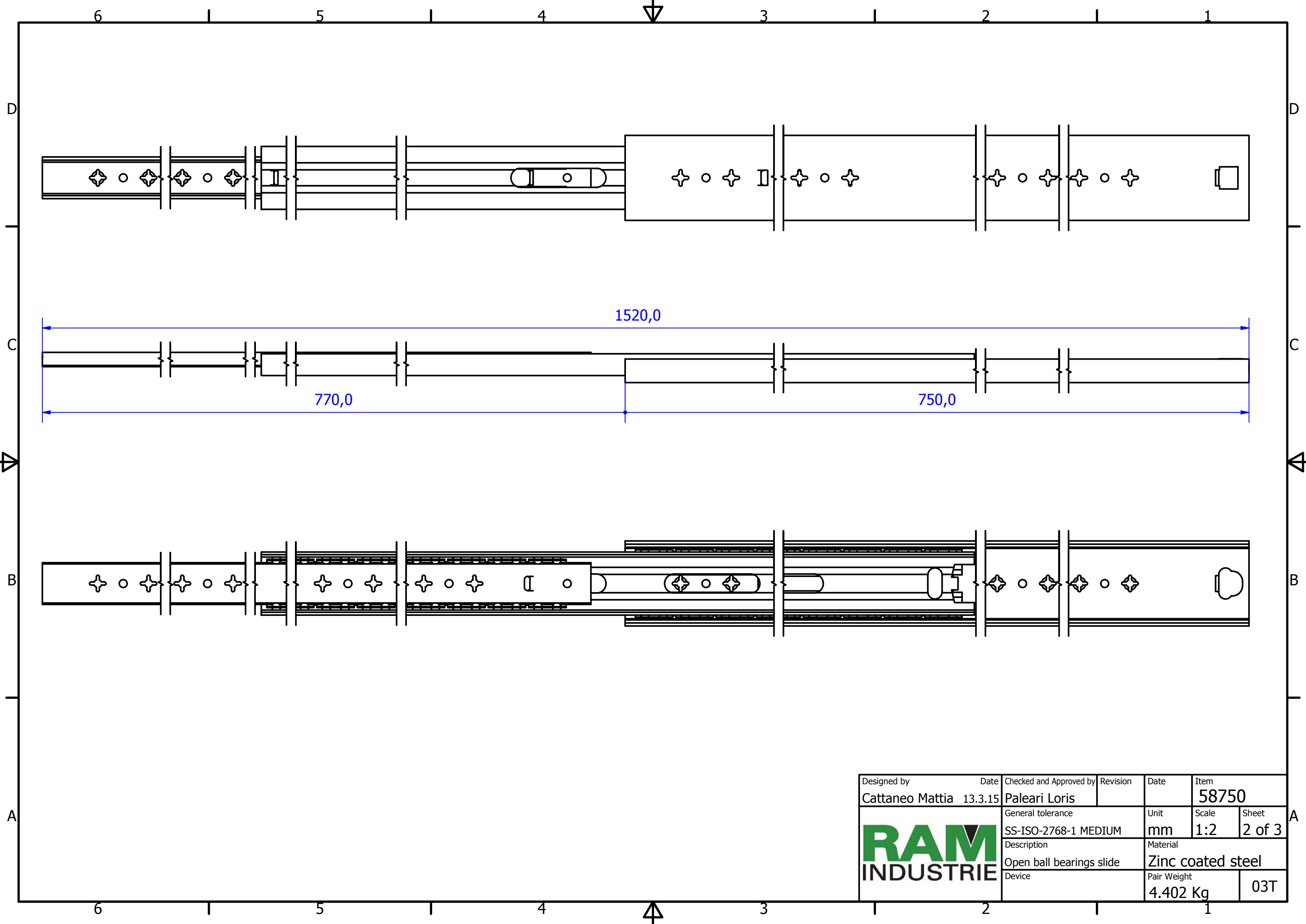
A ( 1.5 : 1 )


B ( 1.5 : 1 )

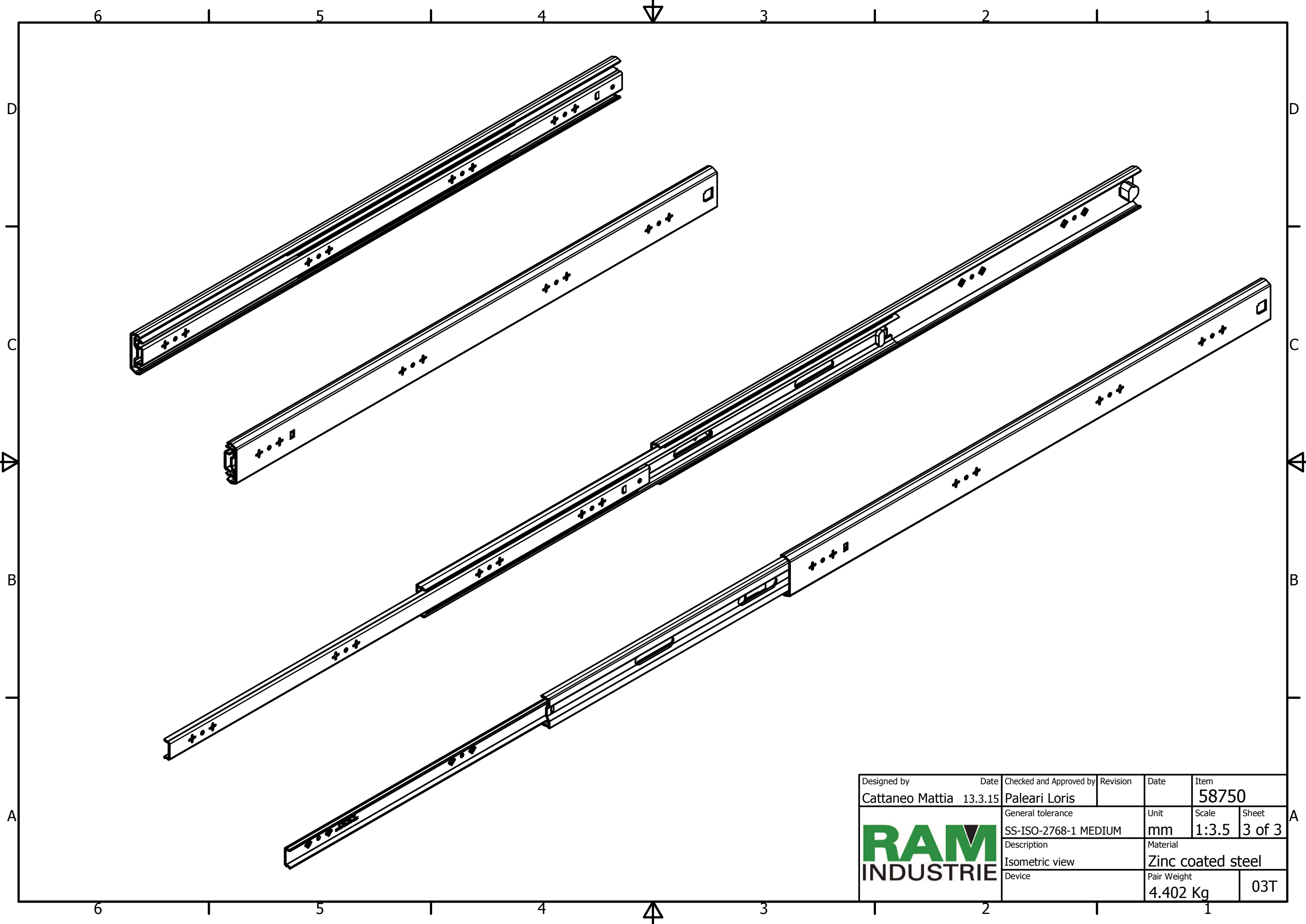
C-C ( 1.5 : 1 )


D ( 2 : 1 )

Designed by Cattaneo Mattia	Date 13.3.15	Checked and Approved by Paleari Loris	Revision	Date	Item 58750
			General tolerance SS-ISO-2768-1 MEDIUM	Unit mm	Scale 1:1.5
			Description Closed ball bearings slide	Material Zinc coated steel	Sheet 1 of 3
Device				Pair Weight 4.402 Kg	03T



Designed by Cattaneo Mattia	Date 13.3.15	Checked and Approved by Paleari Loris	Revision	Date	Item 58750
	General tolerance SS-ISO-2768-1 MEDIUM		Unit mm	Scale 1:2	Sheet 2 of 3
	Description Open ball bearings slide		Material Zinc coated steel		
	Device		Pair Weight 4.402 Kg	03T	



Designed by Cattaneo Mattia	Date 13.3.15	Checked and Approved by Paleari Loris	Revision	Date	Item 58750
	General tolerance SS-ISO-2768-1 MEDIUM		Unit mm	Scale 1:3.5	Sheet 3 of 3
	Description Isometric view		Material Zinc coated steel		
	Device		Pair Weight 4.402 Kg		03T