


Cage with 28 ball bearings
Cage with 30 ball bearings

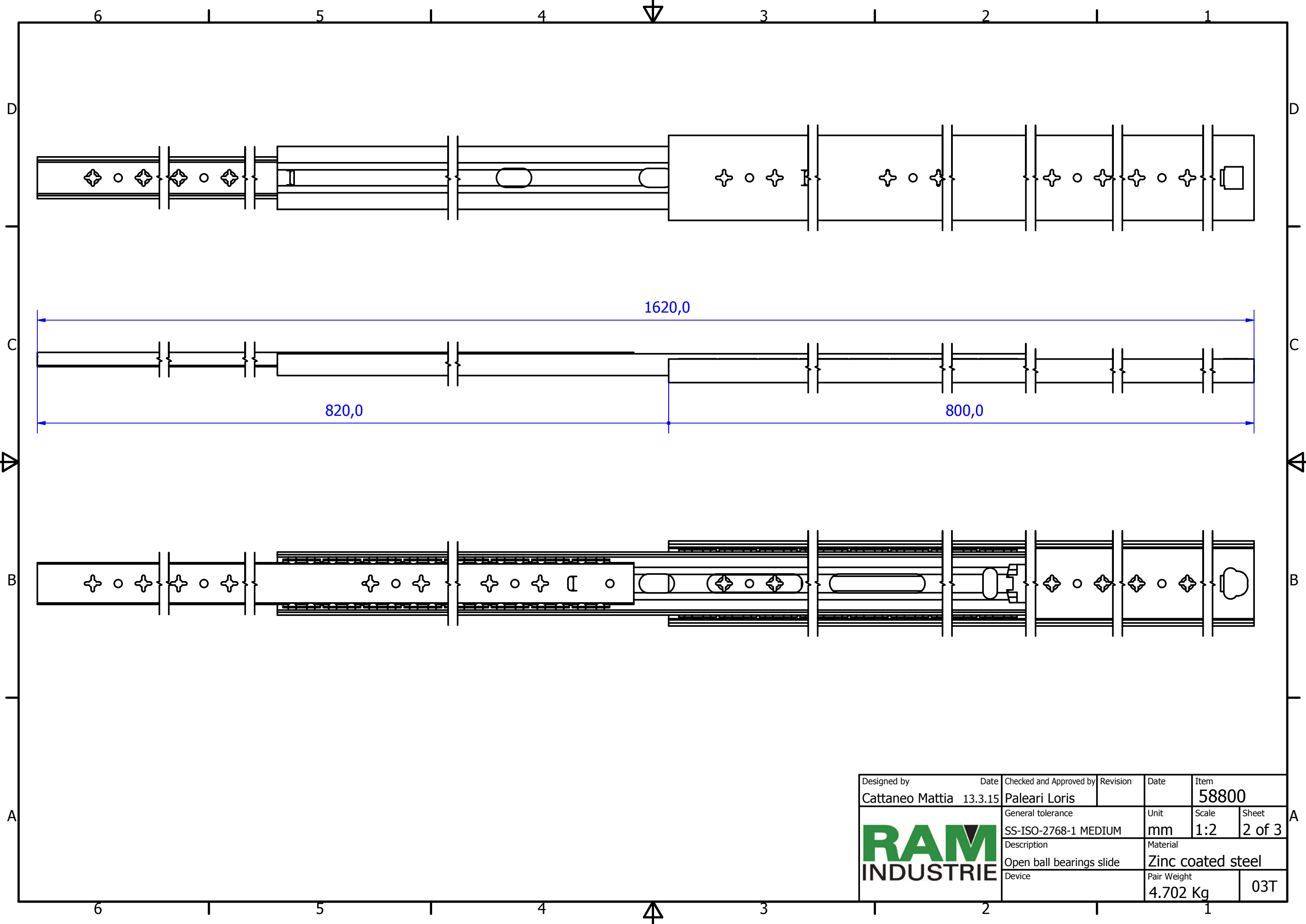
A (1.5 : 1)


B (1.5 : 1)

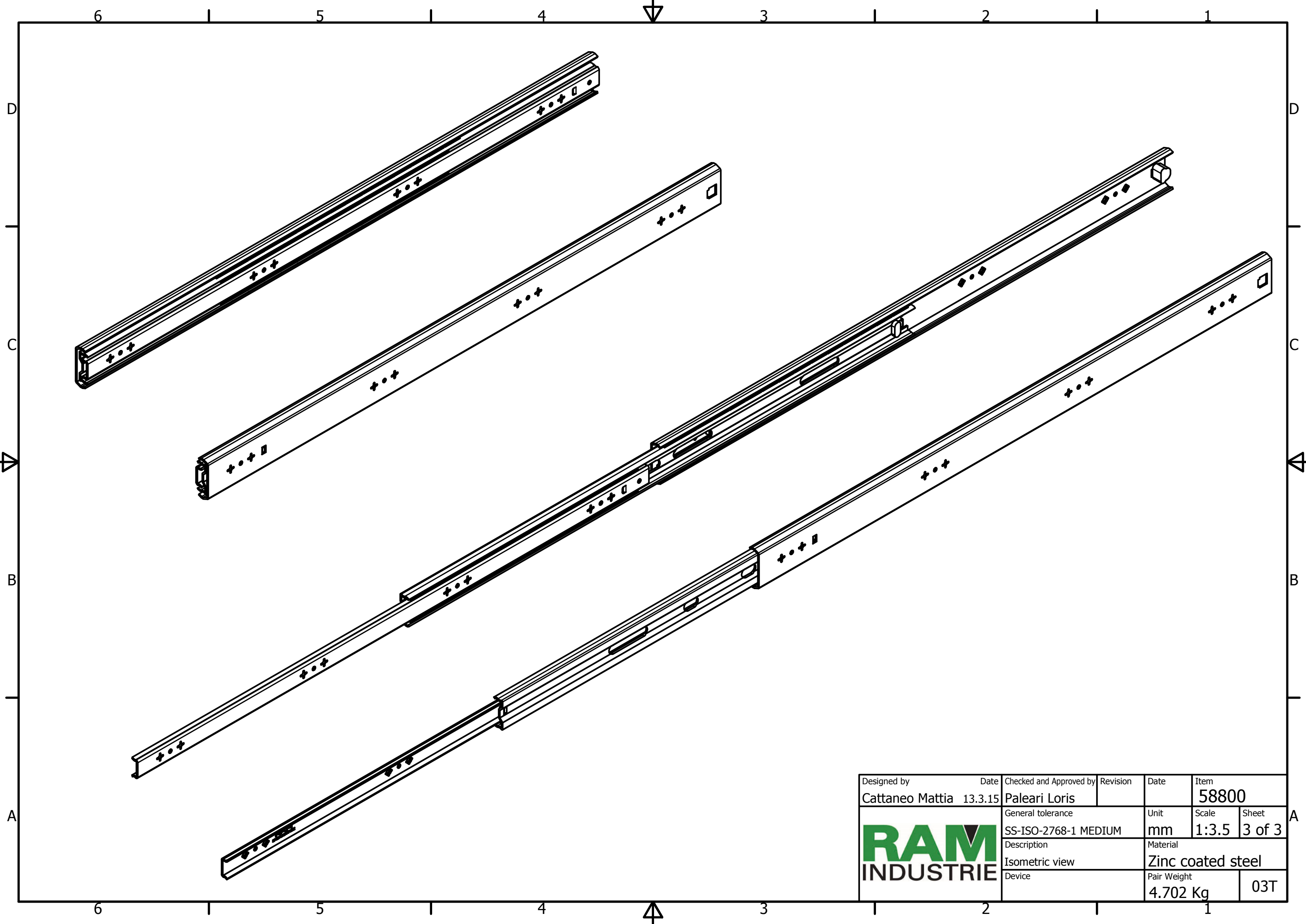
C-C (1.5 : 1)


D (2 : 1)

Designed by Cattaneo Mattia	Date 13.3.15	Checked and Approved by Paleari Loris	Revision	Date	Item 58800
			General tolerance SS-ISO-2768-1 MEDIUM	Unit mm	Scale 1:1.5
			Description Closed ball bearings slide	Material Zinc coated steel	Sheet 1 of 3
Device				Pair Weight 4.702 Kg	03T



Designed by Cattaneo Mattia	Date 13.3.15	Checked and Approved by Paleari Loris	Revision	Date	Item 58800
	General tolerance SS-ISO-2768-1 MEDIUM		Unit mm	Scale 1:2	Sheet 2 of 3
	Description Open ball bearings slide		Material Zinc coated steel		
	Device		Pair Weight 4.702 Kg	03T	



Designed by	Date	Checked and Approved by	Revision	Date	Item
Cattaneo Mattia	13.3.15	Paleari Loris			58800
	General tolerance		Unit	Scale	Sheet
	SS-ISO-2768-1 MEDIUM		mm	1:3.5	3 of 3
Description			Material		
Isometric view			Zinc coated steel		
Device			Pair Weight		
			4.702 Kg		03T