


Cage with 32 ball bearings  
Cage with 34 ball bearings

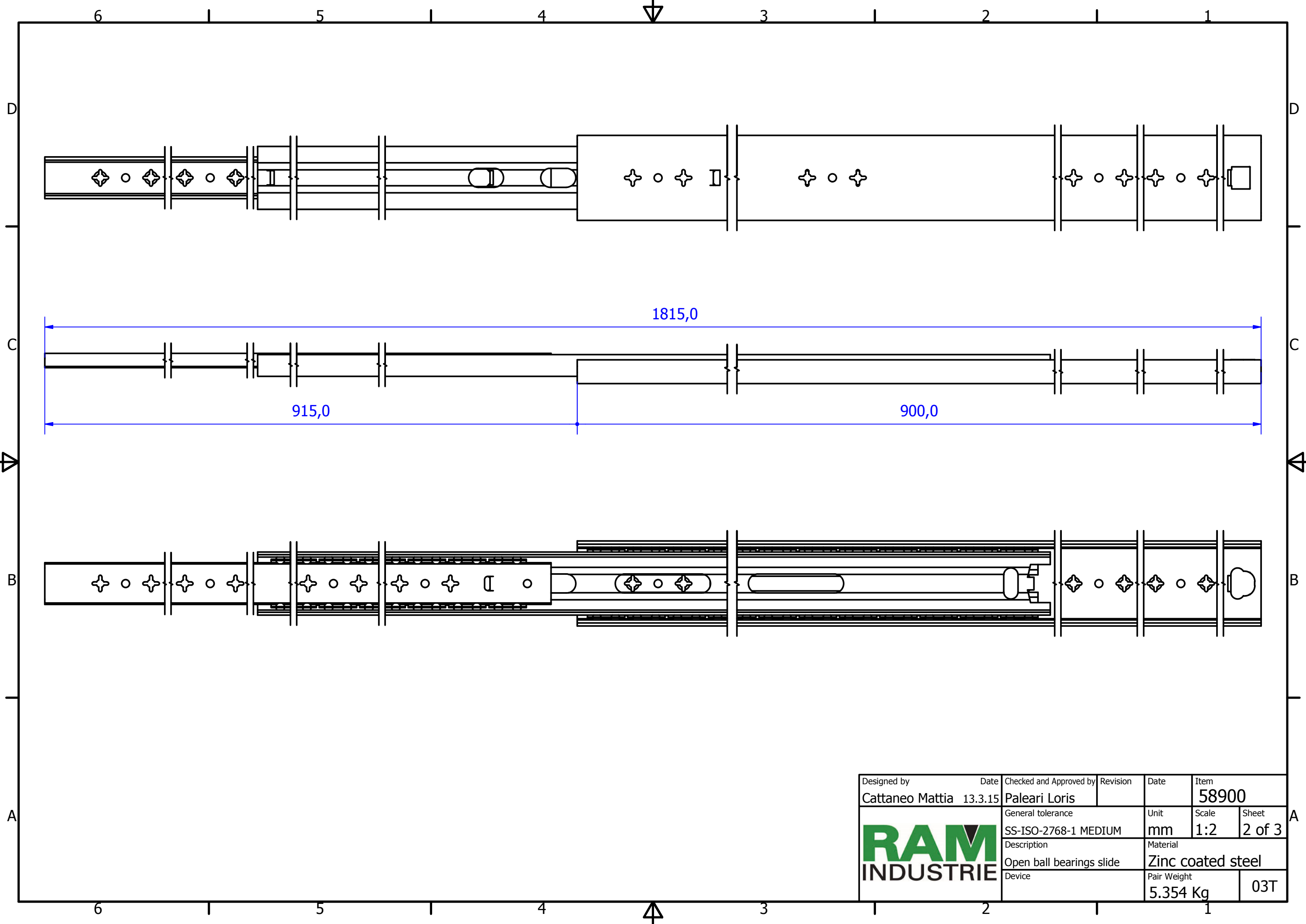
A ( 1.5 : 1 )


B ( 1.5 : 1 )

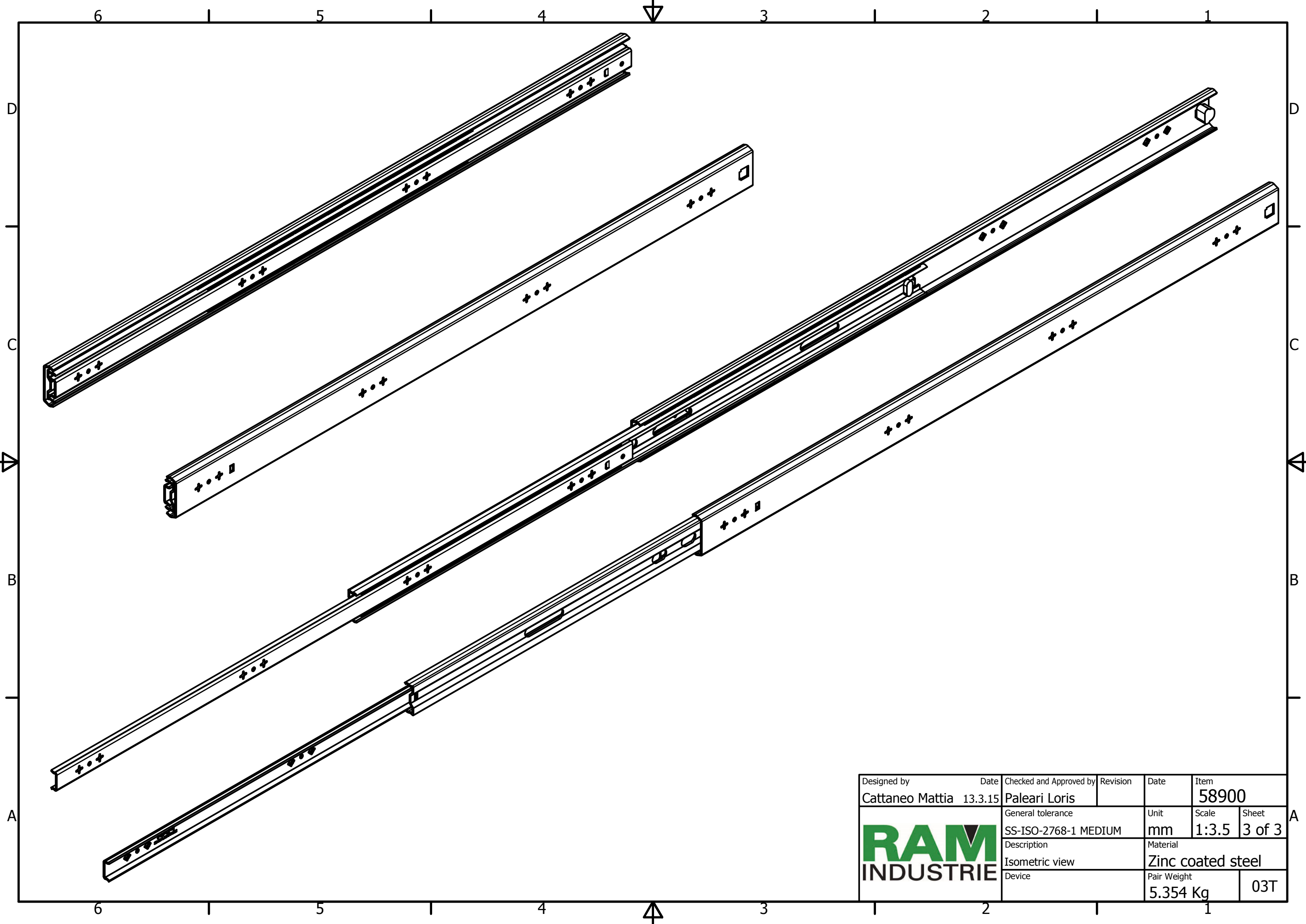
C-C ( 1.5 : 1 )


D ( 2 : 1 )

Designed by Cattaneo Mattia	Date 13.3.15	Checked and Approved by Paleari Loris	Revision	Date	Item 58900
			General tolerance SS-ISO-2768-1 MEDIUM	Unit mm	Scale 1:1.5
			Description Closed ball bearings slide	Material Zinc coated steel	Sheet 1 of 3
Device				Pair Weight 5.354 Kg	03T



Designed by Cattaneo Mattia	Date 13.3.15	Checked and Approved by Paleari Loris	Revision	Date	Item 58900
	General tolerance SS-ISO-2768-1 MEDIUM		Unit mm	Scale 1:2	Sheet 2 of 3
	Description Open ball bearings slide		Material Zinc coated steel		
	Device		Pair Weight 5.354 Kg	03T	



Designed by Cattaneo Mattia	Date 13.3.15	Checked and Approved by Paleari Loris	Revision	Date	Item 58900
	General tolerance SS-ISO-2768-1 MEDIUM		Unit mm	Scale 1:3.5	Sheet 3 of 3
	Description Isometric view			Material Zinc coated steel	
	Device			Pair Weight 5.354 Kg	03T