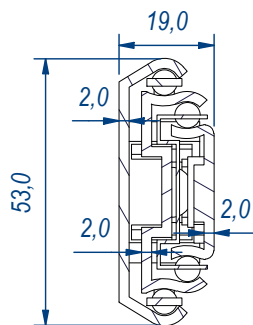
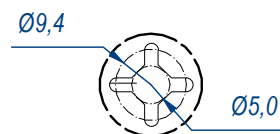


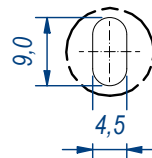
SEZ. A-A



B (1:1)



C (1:1)

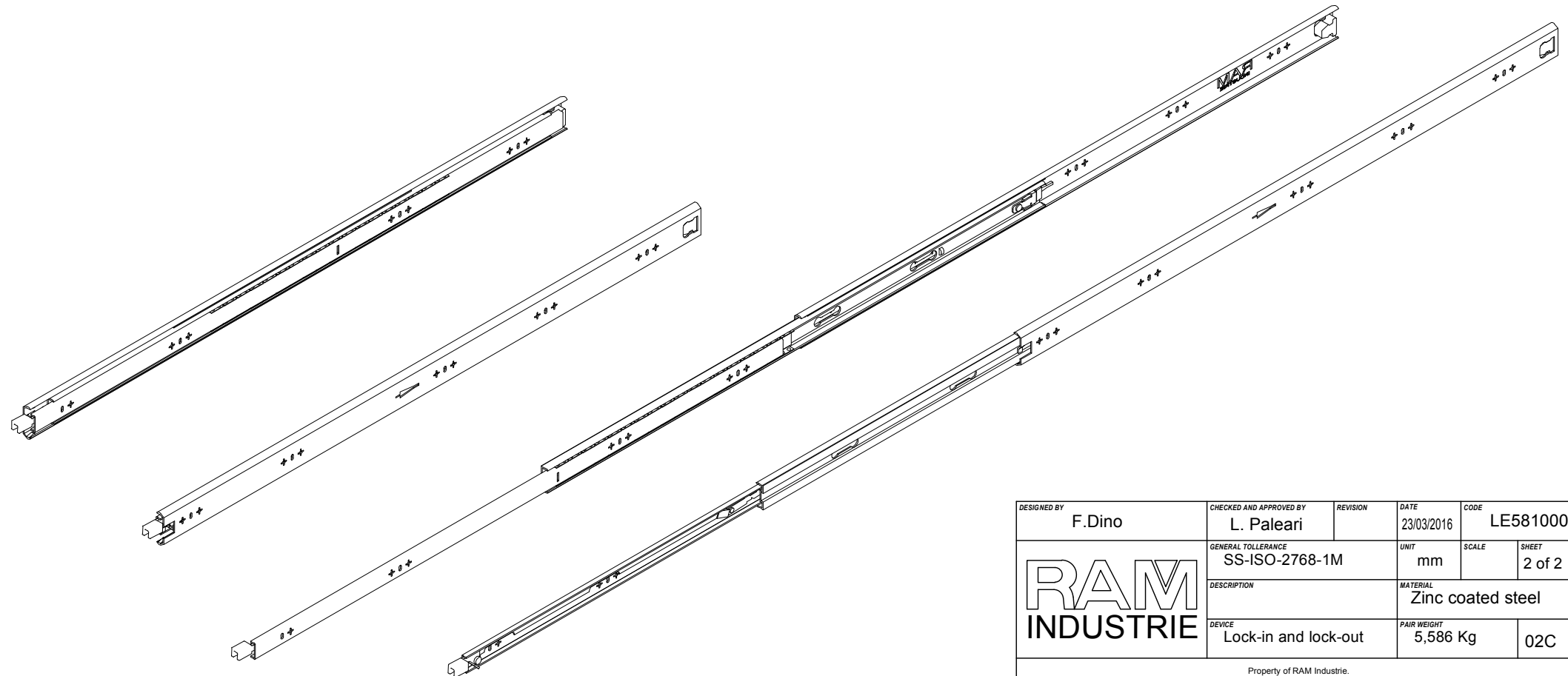
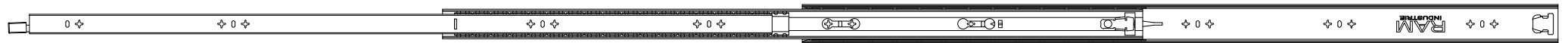



| | | | | |
|--------------------------------|--|--------------------------------------|-------------------------------|--------------------------|
| DESIGNED BY F.Dino | CHECKED AND APPROVED BY L. Paleari | REVISION | DATE 23/03/2016 | CODE LE581000 |
| RAM INDUSTRIE | | GENERAL TOLLERANCE SS-ISO-2768-1M | UNIT mm | SCALE SHEET 1 of 2 |
| | | DESCRIPTION Lock-in and lock-out | MATERIAL Zinc coated steel | PAIR WEIGHT 5,586 Kg |
| 02C | | | | |



2057,0

1040,0



| | | | | |
|---|---------------------------------------|--------------------------------------|-------------------------------|--------------------------|
| DESIGNED BY F.Dino | CHECKED AND APPROVED BY L. Paleari | REVISION | DATE 23/03/2016 | CODE LE581000 |
|  | | GENERAL TOLLERANCE SS-ISO-2768-1M | UNIT mm | SCALE SHEET 2 of 2 |
| | | DESCRIPTION Lock-in and lock-out | MATERIAL Zinc coated steel | PAIR WEIGHT 5,586 Kg |

Property of RAM Industrie.
Without its written authorization the present drawing shall neither be used for construction anyway, communicated to third parties, nor reproduced.