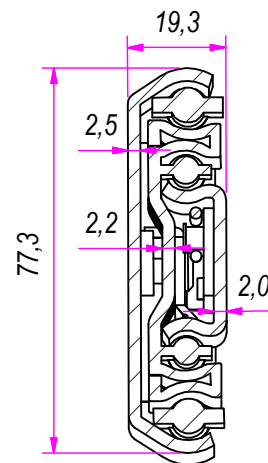
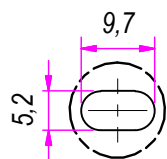


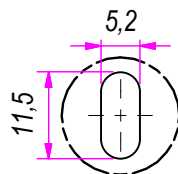
SEZ. A-A



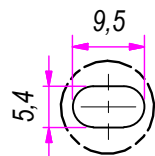
B (1:1)



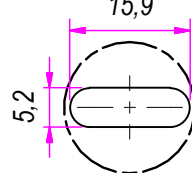
C (1:1)



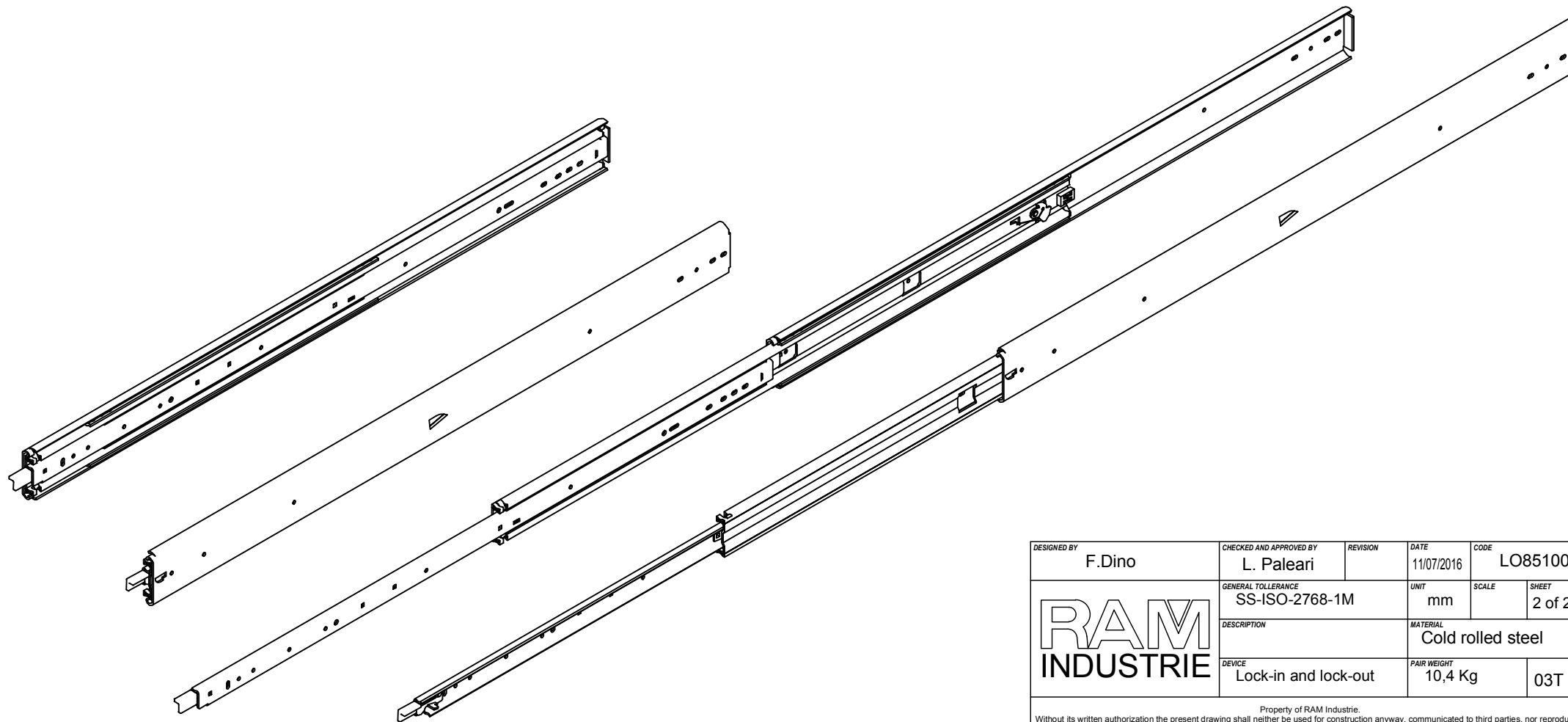
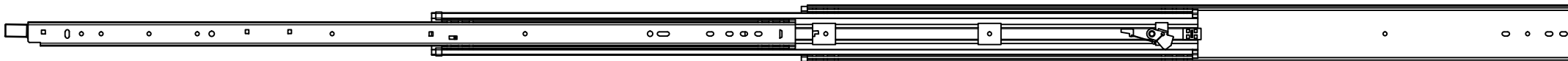
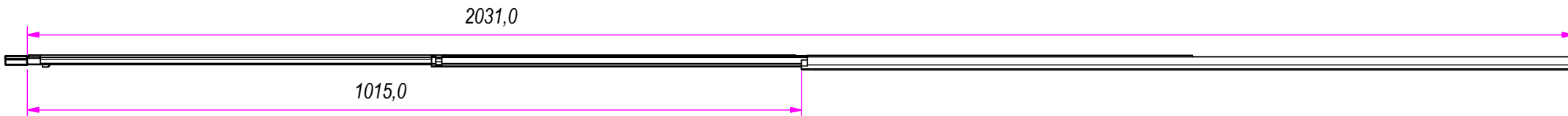
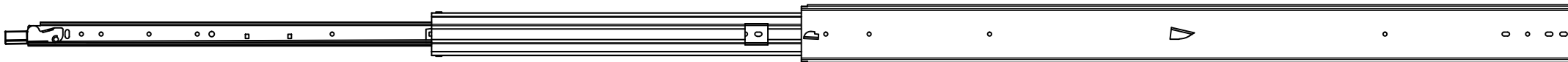
D (1:1)




E (1:1)



| | | | | |
|---|---------------------------------------|---|-------------------------------|------------------------|
| DESIGNED BY F.Dino | CHECKED AND APPROVED BY L. Paleari | REVISION | DATE 11/07/2016 | CODE LO851000 |
| RAM INDUSTRIE | | GENERAL TOLERANCE SS-ISO-2768-1M | UNIT mm | SCALE 1 of 2 |
| | | DESCRIPTION DEVICE Lock-in and lock-out | MATERIAL Cold rolled steel | PAIR WEIGHT 10,4 Kg |
| Property of RAM Industrie. Without its written authorization the present drawing shall neither be used for construction anyway, communicated to third parties, nor reproduced. | | | | |
| | | | 03T | |



| | | | | | |
|---|--------------------------------------|---------------------------------------|----------|-------------------------------|--------------------------|
| DESIGNED BY F.Dino | | CHECKED AND APPROVED BY L. Paleari | REVISION | DATE 11/07/2016 | CODE LO851000 |
|  | GENERAL TOLLERANCE SS-ISO-2768-1M | | | UNIT mm | SCALE SHEET 2 of 2 |
| | DESCRIPTION | | | MATERIAL Cold rolled steel | |
| | DEVICE Lock-in and lock-out | | | PAIR WEIGHT 10,4 Kg | 03T |
| Property of RAM Industrie. Without its written authorization the present drawing shall neither be used for construction anyway, communicated to third parties, nor reproduced. | | | | | |