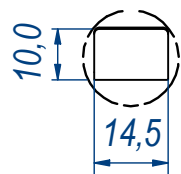
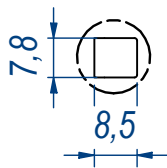
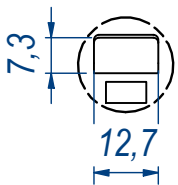


B (1 : 1,5)

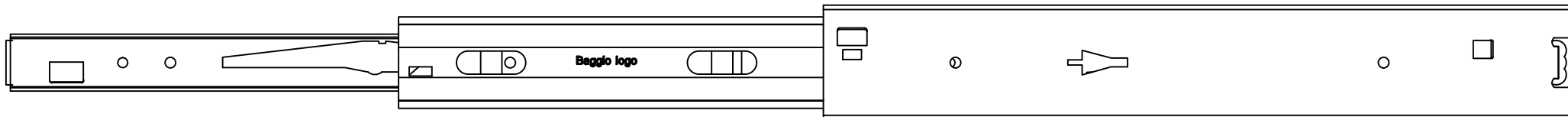
C (1 : 1,5)

D (1 : 1,5)

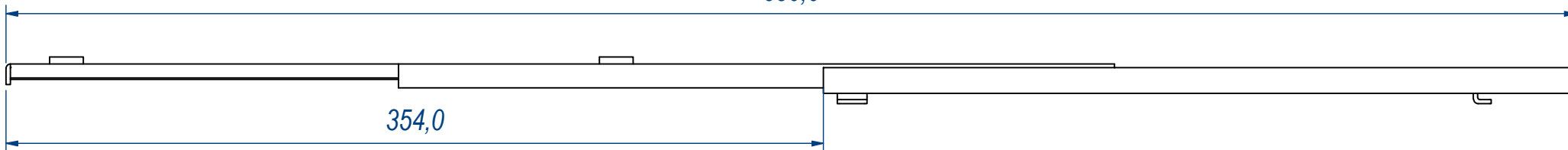


DESIGNED BY F.Dino	CHECKED AND APPROVED BY L. Paleari	REVISION	DATE 08/02/2016	CODE LOS52326
GENERAL TOLERANCE SS-ISO-2768-1M		UNIT mm	SCALE	SHEET 1 of 2
DESCRIPTION RAM INDUSTRIE		MATERIAL Zinc coated steel		
DEVICE Soft lock-out		PAIR WEIGHT 1,4 Kg		02C

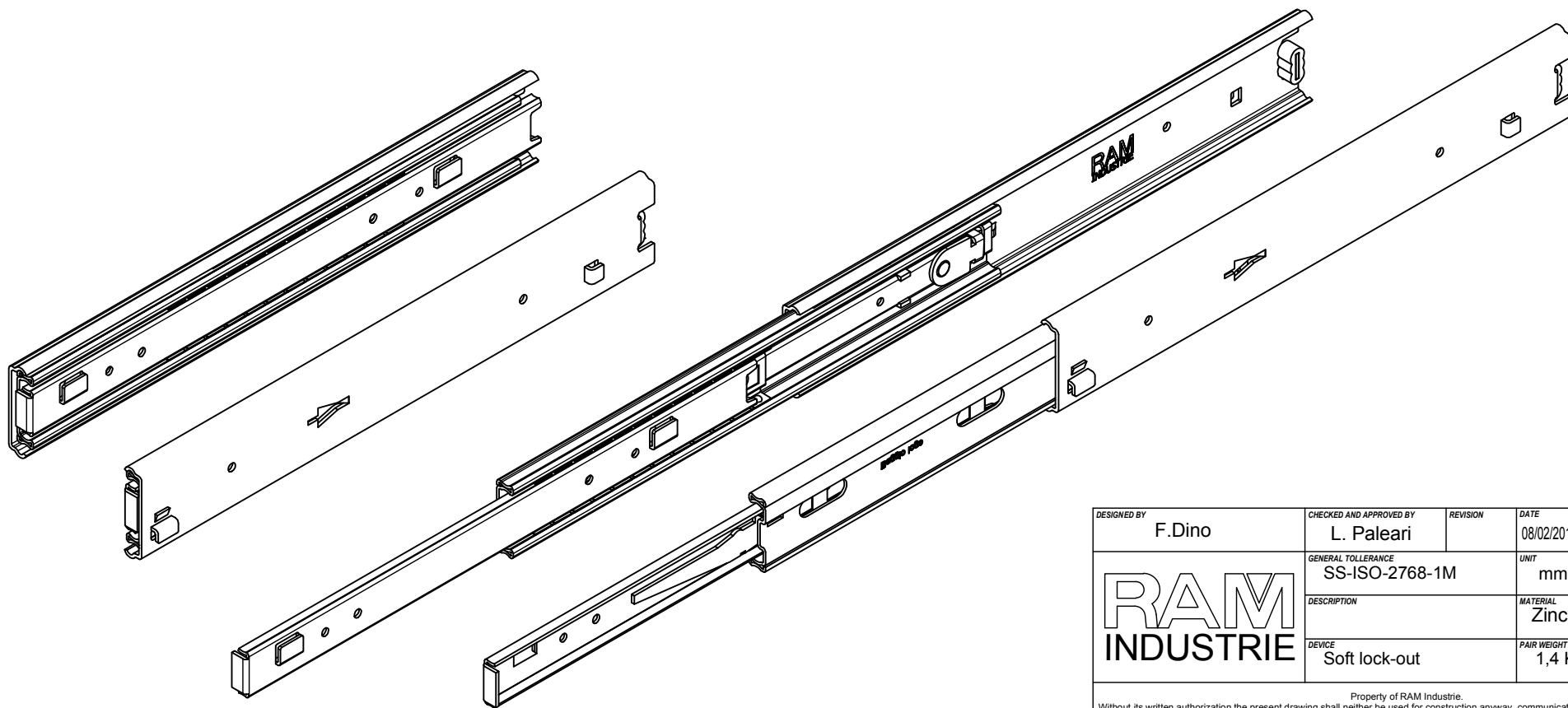
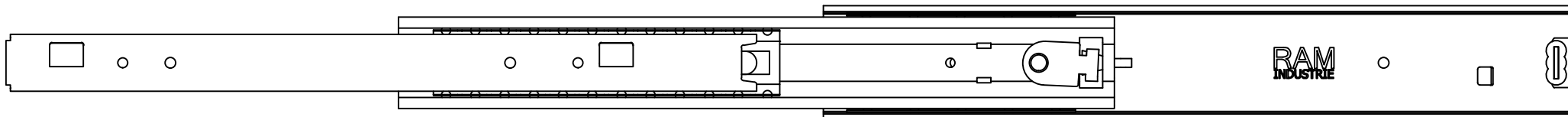
Property of RAM Industrie.
Without its written authorization the present drawing shall neither be used for construction anyway, communicated to third parties, nor reproduced.




680,0



354,0



DESIGNED BY F.Dino	CHECKED AND APPROVED BY L. Paleari	REVISION	DATE 08/02/2016	CODE LOS52326
		GENERAL TOLERANCE SS-ISO-2768-1M	UNIT mm	SCALE SHEET 2 of 2
		DESCRIPTION Soft lock-out	MATERIAL Zinc coated steel	PAIR WEIGHT 1,4 Kg
				02C

Property of RAM Industrie.
Without its written authorization the present drawing shall neither be used for construction anyway, communicated to third parties, nor reproduced.