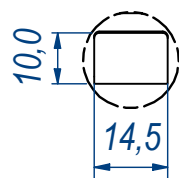
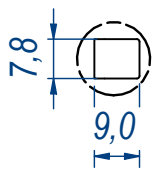
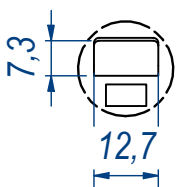


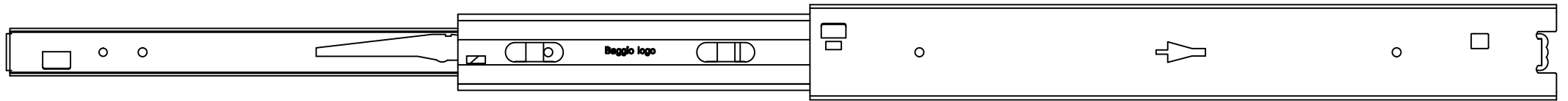
B (1 : 1,5)

C (1 : 1,5)

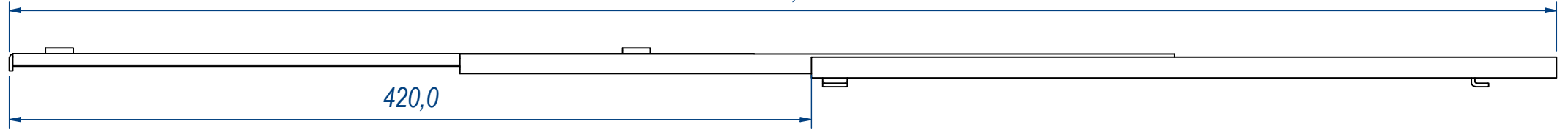
D (1 : 1,5)



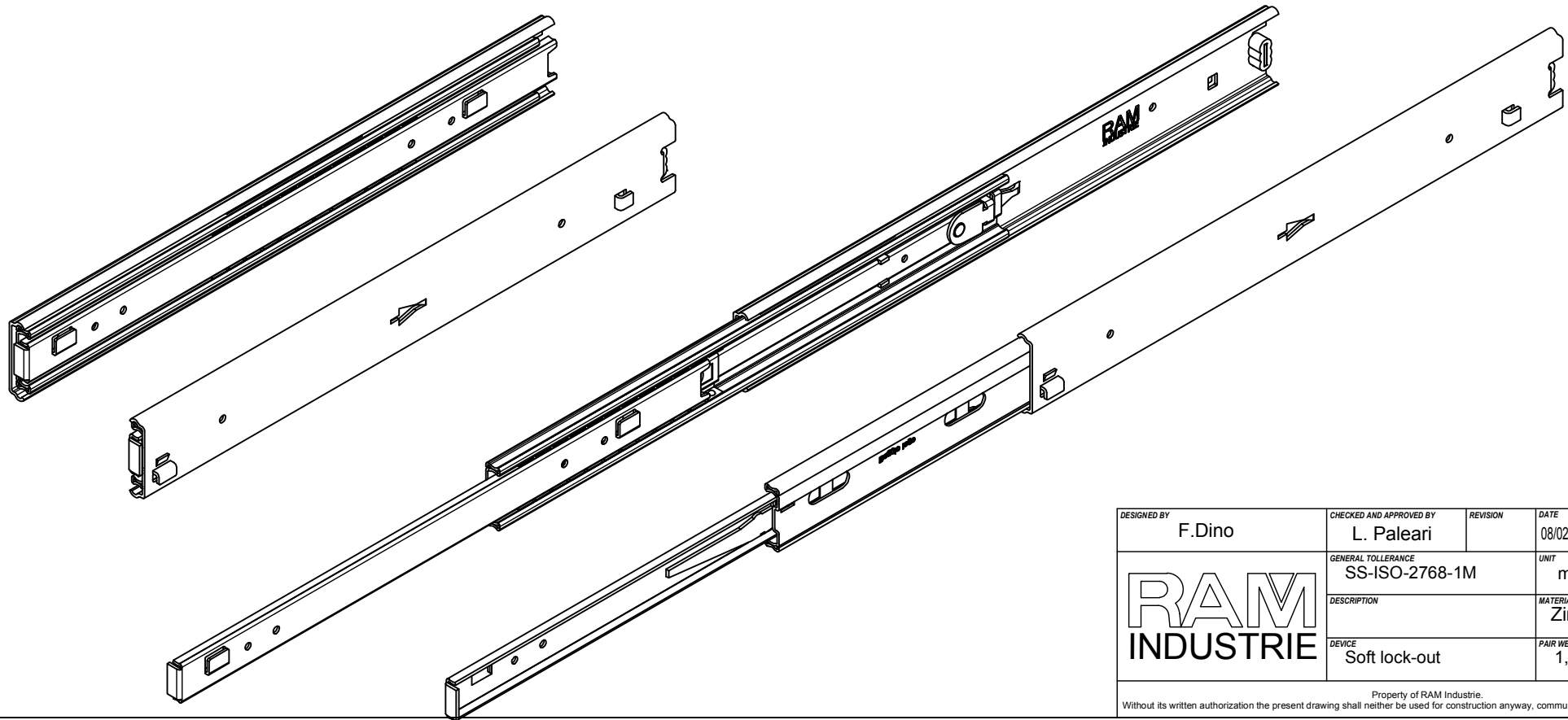
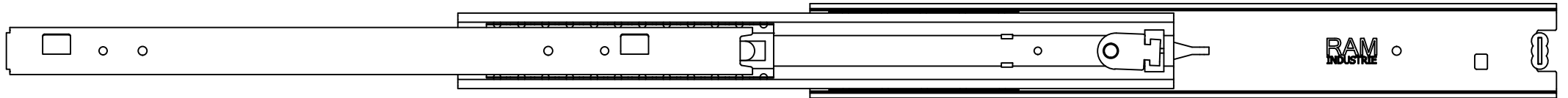
DESIGNED BY F.Dino	CHECKED AND APPROVED BY L. Paleari	REVISION	DATE 08/02/2016	CODE LOS52390
GENERAL TOLLERANCE SS-ISO-2768-1M		UNIT mm	SCALE	SHEET 1 of 2
DESCRIPTION Soft lock-out		MATERIAL Zinc coated steel		
PAIR WEIGHT 1,652 Kg		02C		




810,0



420,0



DESIGNED BY F.Dino	CHECKED AND APPROVED BY L. Paleari	REVISION	DATE 08/02/2016	CODE LOS52390
		GENERAL TOLLERANCE SS-ISO-2768-1M	UNIT mm	SCALE SHEET 2 of 2
		DESCRIPTION	MATERIAL Zinc coated steel	
DEVICE Soft lock-out		PAIR WEIGHT 1,652 Kg	02C	

Property of RAM Industrie.  
Without its written authorization the present drawing shall neither be used for construction anyway, communicated to third parties, nor reproduced.