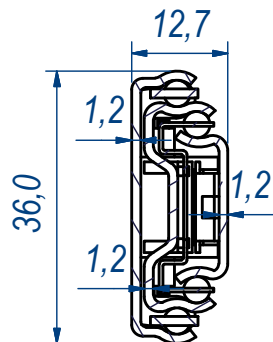
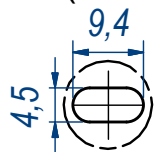


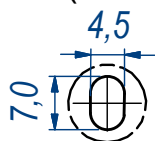
SEZ. A-A




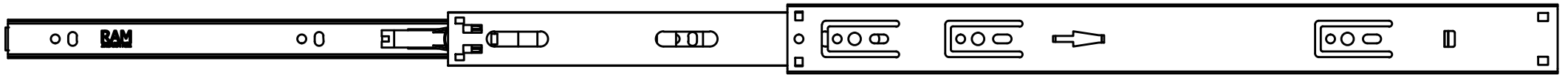
B (1:1)



C (1:1)

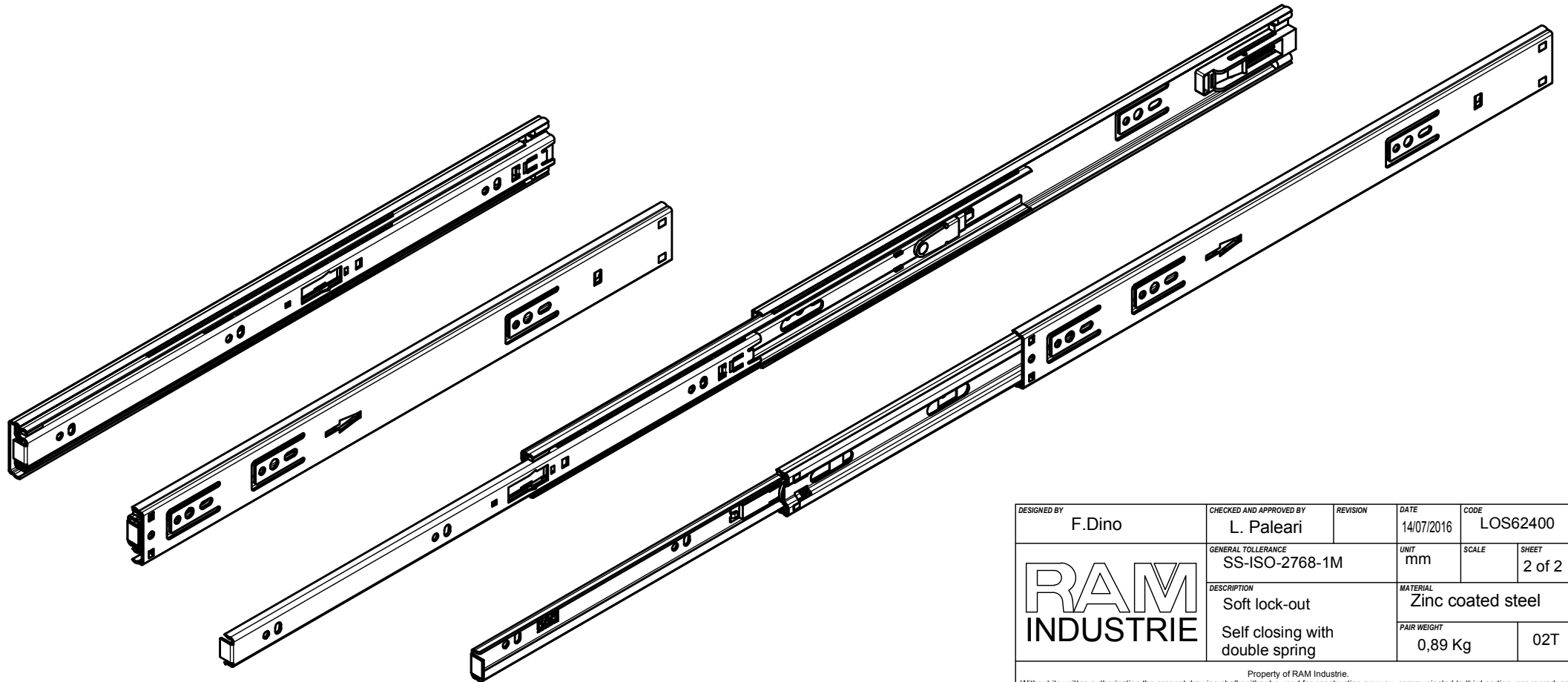



DESIGNED BY F.Dino	CHECKED AND APPROVED BY L. Paleari	REVISION	DATE 14/07/2016	CODE LOS62400
GENERAL TOLLERANCE SS-ISO-2768-1M		UNIT mm	SCALE	SHEET 1 of 2
		DESCRIPTION Soft lock-out		MATERIAL Zinc coated steel
		Self closing with double spring		PAIR WEIGHT 0,89 Kg
<small>Property of RAM Industrie. Without its written authorization the present drawing shall neither be used for construction anyway, communicated to third parties, nor reproduced.</small>				



808,0

408,0



DESIGNED BY F.Dino	CHECKED AND APPROVED BY L. Paleari	REVISION	DATE 14/07/2016	CODE LOS62400
GENERAL TOLLERANCE SS-ISO-2768-1M		UNIT mm	SCALE	SHEET 2 of 2
		DESCRIPTION Soft lock-out		MATERIAL Zinc coated steel
		Self closing with double spring		PAIR WEIGHT 0,89 Kg

Property of RAM Industrie.  
Without its written authorization the present drawing shall neither be used for construction anyway, communicated to third parties, nor reproduced.