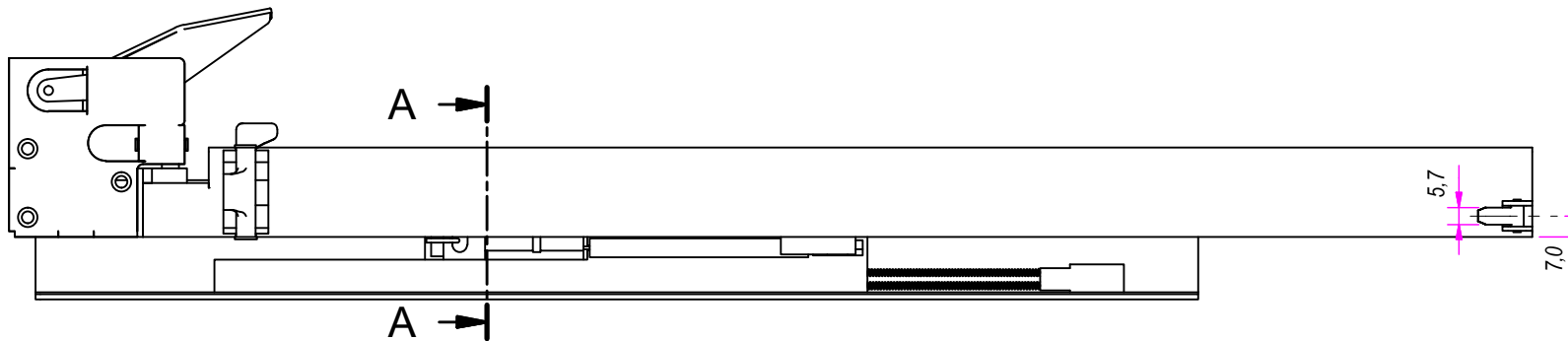
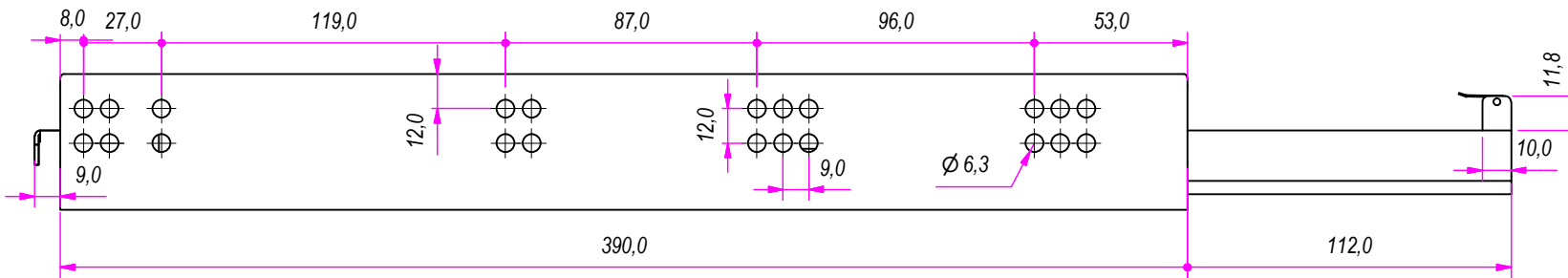
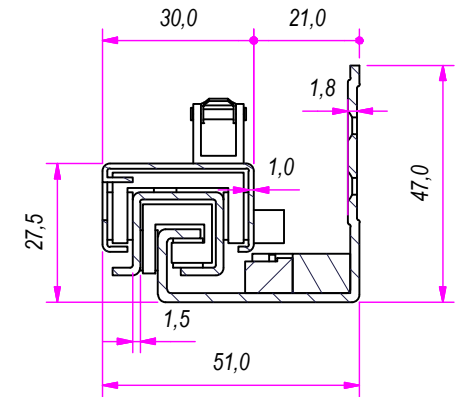


SEZ. A-A

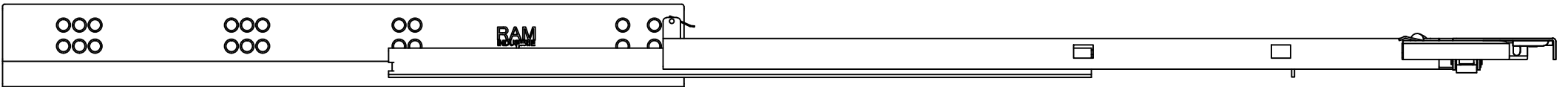
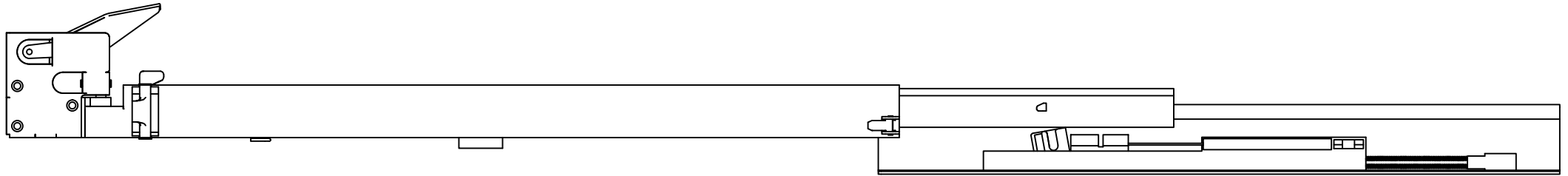
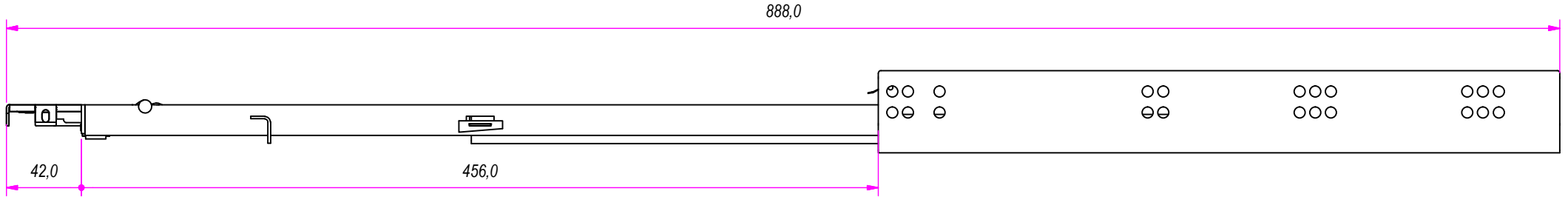
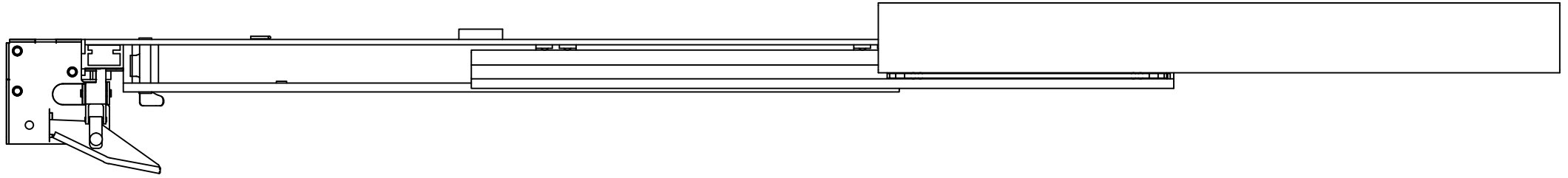


| | | | | |
|--|---------------------------------------|--------------------------------------|-------------------------------|-----------------|
| DESIGNED BY F.Dino | CHECKED AND APPROVED BY L. Paleari | GENERAL TOLLERANCE SS-ISO-2768-1M | DATE 05/04/2017 | CODE Q23500 |
| PACKAGING Carton 10 sets/Packed R+L | | | UNIT mm | SHEET 1 of 3 |
| DESCRIPTION Soft self closing/Oil piston/ Push&Rebound | | | MATERIAL Cold rolled steel | |
| | | | PAIR WEIGHT 2,286 Kg | 04C |




| REVISION HISTORY | | REV | DESCRIPTION | DATE |
|---|---|-----|-------------|------------|
| Guide per cassetti; guide telescopiche | Coulisses à billes; coulisse télescopique | 1a | | 05/04/2017 |
| Drawer slide; telescopic ball bearing slide | Guías para cajones; guía teleópica | | | |
| Kugelführung; Teleskopschienen | | | | |

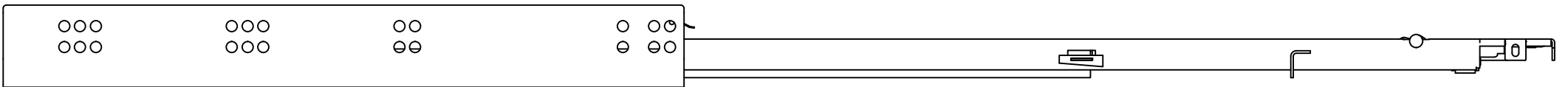
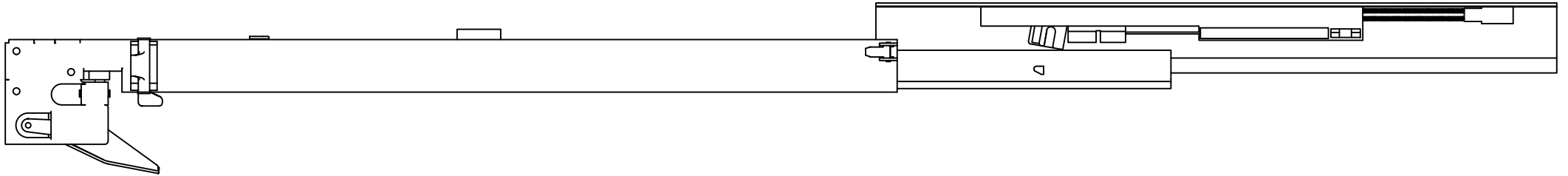
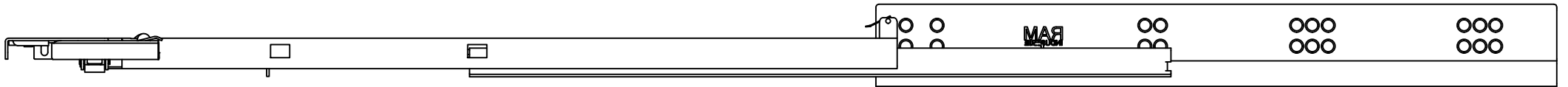
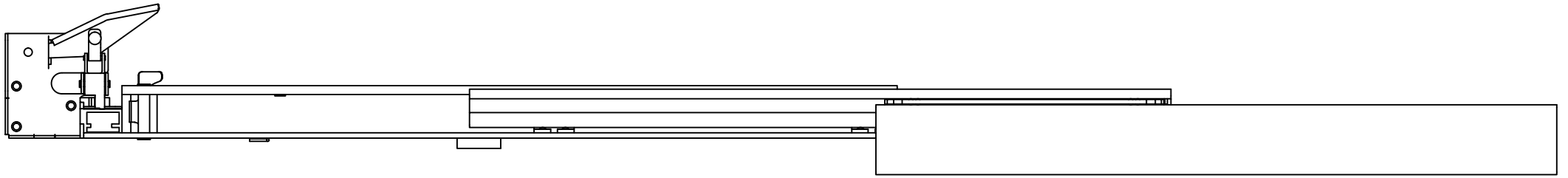
Property of RAM Industrie.
Without its written authorization the present drawing shall neither be used for construction anyway, communicated to third parties, nor reproduced.




| | |
|---|---|
| Guide per cassetti; guide telescopiche | Coulisses à billes; coulisse télescopique |
| Drawer slide; telescopic ball bearing slide | Guías para cajones; guía teleópica |
| Kugelführung; Teleskopschienen | |

| REVISION HISTORY | |
|------------------|-------------|
| REV | DESCRIPTION |
| 1a | |

| | | | | | |
|---|---------------------------------------|--------------------------------------|--|-------------------------------|-------------------------|
| DESIGNED BY F. Dino | CHECKED AND APPROVED BY L. Paleari | GENERAL TOLLERANCE SS-ISO-2768-1M | DATE 05/04/2017 | CODE Q23500 | |
|  | | | PACKAGING Carton 10 sets/Packed R+L | UNIT mm | SHEET 2 of 3 |
| | | | DESCRIPTION Soft self closing/Oil piston/ Push&Rebound | MATERIAL Cold rolled steel | PAIR WEIGHT 2,286 Kg |
| Property of RAM Industrie. | | | | | |
| Without its written authorization the present drawing shall neither be used for construction anyway, communicated to third parties, nor reproduced. | | | | | |



| | | | | | |
|---|---------------------------------------|-------------------------------------|--|-------------------------------|-------------------------|
| DESIGNED BY F.Dino | CHECKED AND APPROVED BY L. Paleari | GENERAL TOLERANCE SS-ISO-2768-1M | DATE 05/04/2017 | CODE Q23500 | |
|  | | | PACKAGING Carton 10 sets/Packed R+L | UNIT mm | SHEET 3 of 3 |
| | | | DESCRIPTION Soft self closing/Oil piston/ Push&Rebound | MATERIAL Cold rolled steel | PAIR WEIGHT 2,286 Kg |
| <small>Property of RAM Industrie. Without its written authorization the present drawing shall neither be used for construction anyway, communicated to third parties, nor reproduced.</small> | | | | | |