
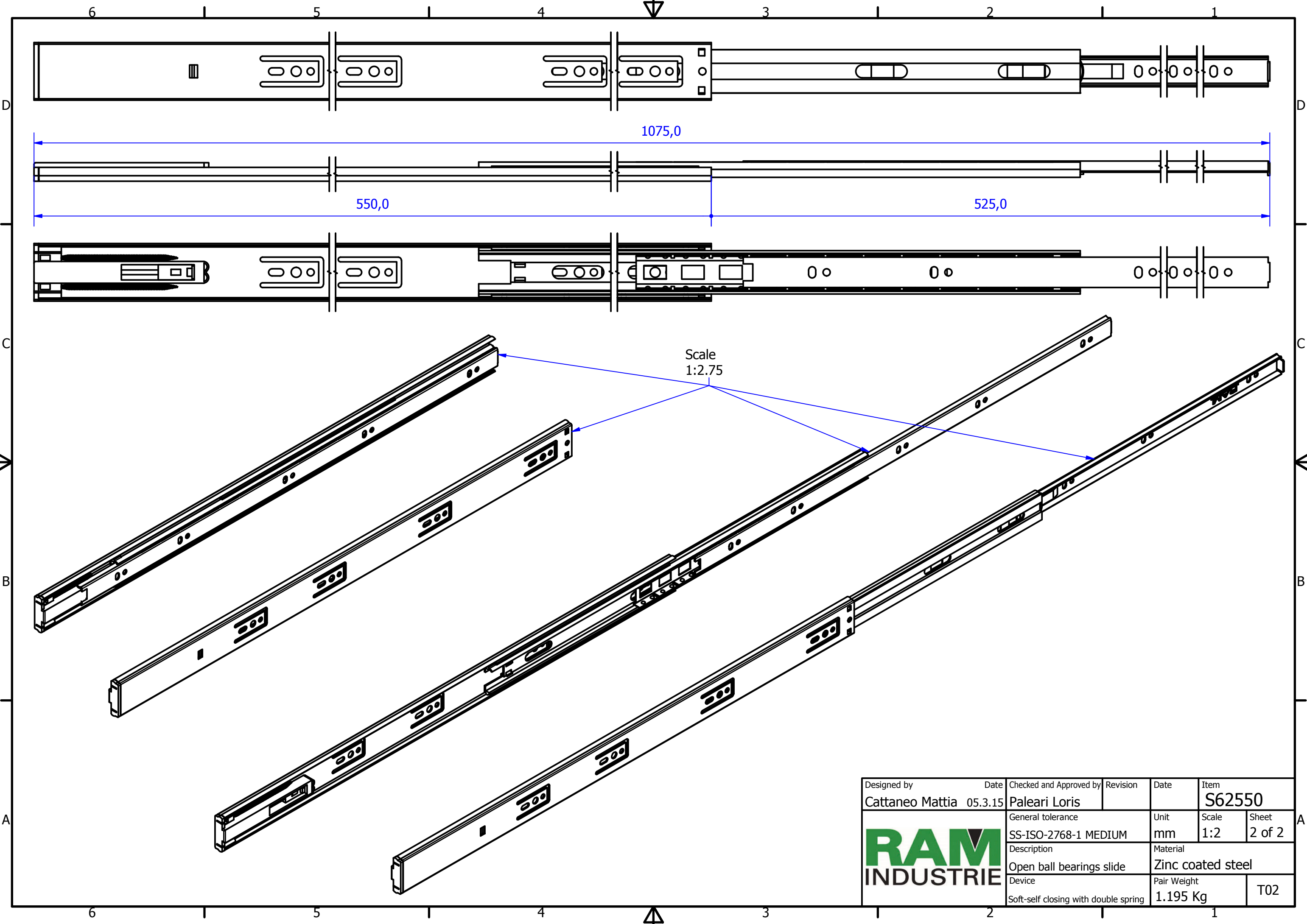



Designed by Cattaneo Mattia	Date 05.3.15	Checked and Approved by Paleari Loris	Revision	Date	Item S62550
		General tolerance SS-ISO-2768-1 MEDIUM	Unit mm	Scale 1:1.5	Sheet 1 of 2
		Description Closed ball bearings slide	Material Zinc coated steel		
Device Soft-self closing with double spring		Pair Weight 1.195 Kg	T02		



Designed by	Date	Checked and Approved by	Revision	Date	Item
Cattaneo Mattia	05.3.15	Paleari Loris			S62550
			General tolerance	Unit	Scale
			SS-ISO-2768-1 MEDIUM	mm	1:2
Description			Material		
Open ball bearings slide			Zinc coated steel		
Device			Pair Weight		T02
Soft-self closing with double spring			1.195 Kg		