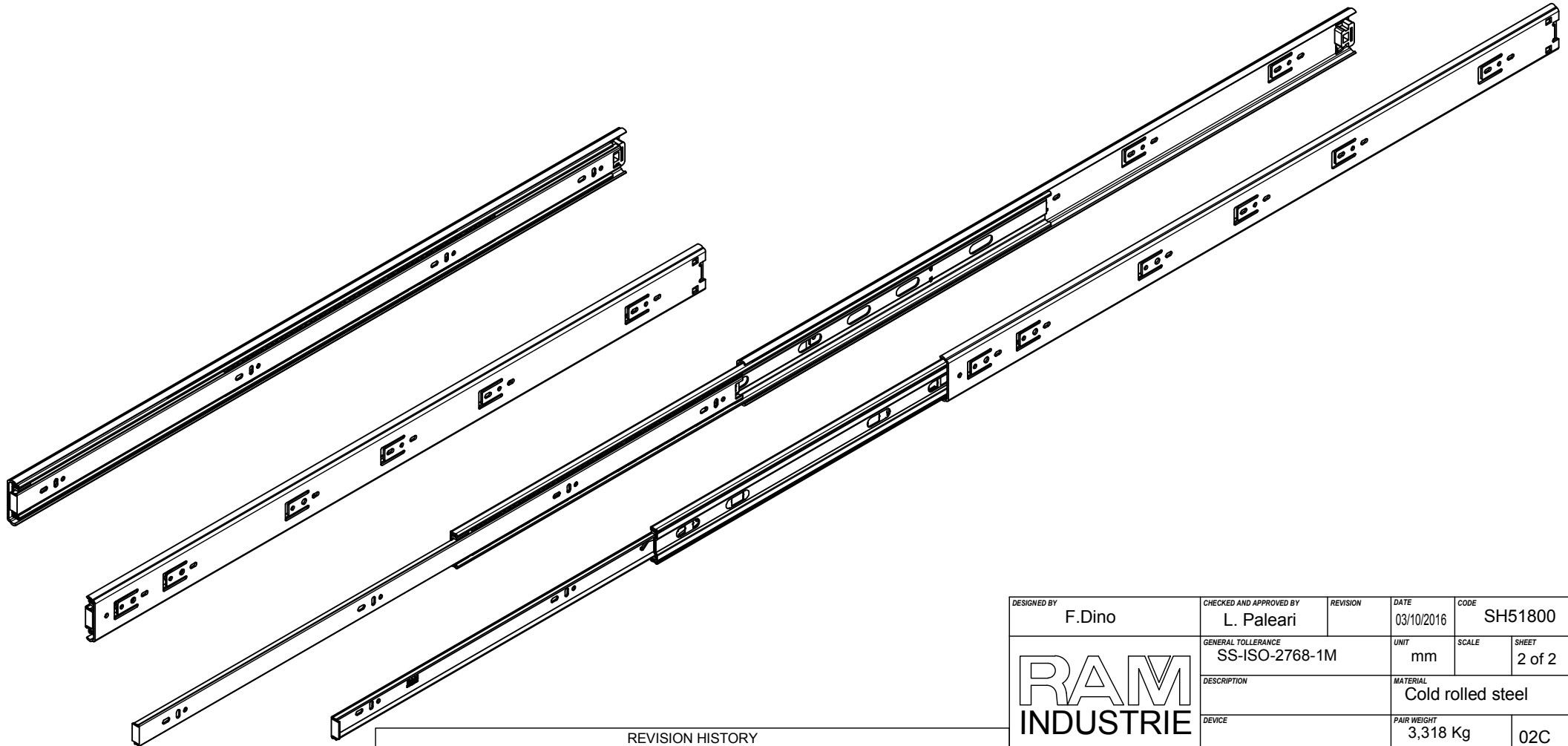
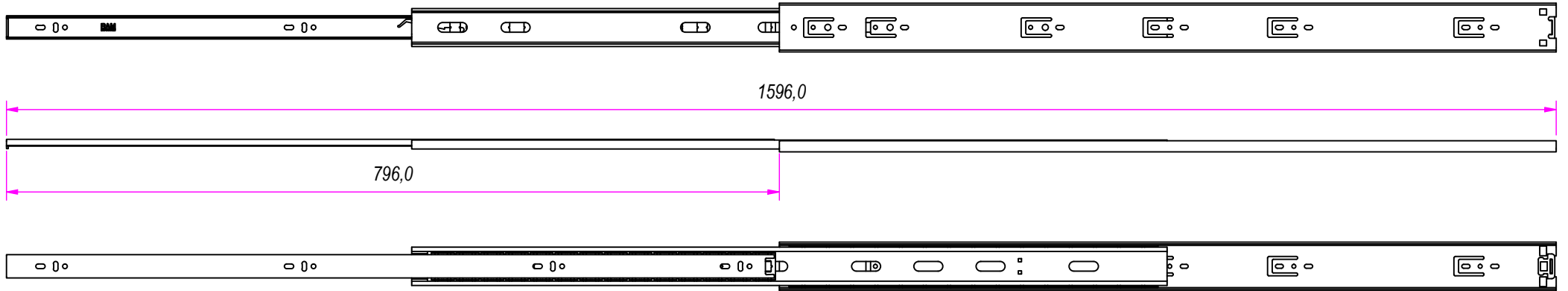



| REVISION HISTORY | | | |
|------------------|-------------|-------------|------------|
| REV | DESCRIPTION | APPROVED BY | DATE |
| 1 | | F.Dino | 03/10/2016 |

| | | | | |
|---|--|--------------------------------------|-------------------------------|-----------------|
| DESIGNED BY F.Dino | CHECKED AND APPROVED BY L. Paleari | REVISION | DATE 03/10/2016 | CODE SH51800 |
| RAM INDUSTRIE | | GENERAL TOLLERANCE SS-ISO-2768-1M | UNIT mm | SCALE 1 of 2 |
| | | DESCRIPTION | MATERIAL Cold rolled steel | |
| DEVICE | | PAIR WEIGHT 3,318 Kg | 02C | |
| Property of RAM Industrie. Without its written authorization the present drawing shall neither be used for construction anyway, communicated to third parties, nor reproduced. | | | | |



| REVISION HISTORY | | | |
|------------------|-------------|-------------|------------|
| REV | DESCRIPTION | APPROVED BY | DATE |
| 1 | | F.Dino | 03/10/2016 |

| | | | | |
|---|---------------------------------------|--------------------------------------|-------------------------------|--------------------------|
| DESIGNED BY F.Dino | CHECKED AND APPROVED BY L. Paleari | REVISION | DATE 03/10/2016 | CODE SH51800 |
|  | | GENERAL TOLLERANCE SS-ISO-2768-1M | UNIT mm | SCALE SHEET 2 of 2 |
| | | DESCRIPTION | MATERIAL Cold rolled steel | |
| DEVICE | | PAIR WEIGHT 3,318 Kg | 02C | |

Property of RAM Industrie.
Without its written authorization the present drawing shall neither be used for construction anyway, communicated to third parties, nor reproduced.